

ADDENDUM NO. 3
March 24, 2023
225107

RE: ALBURGH VILLAGE WATER TANK REPLACEMENT

FROM: DuBOIS & KING, INC.
P.O. Box 339
Randolph, Vermont 05060
(802) 728-3376

TO: Prospective Bidders

This Addendum forms part of the Contract Documents and modifies the original Bidding Documents issued by the Village of Alburgh, Vermont, for the Alburgh Village Water Tank Replacement project dated February 10, 2023. **Acknowledge receipt of this Addendum in the space provided on Page 1 of the Bid Form. Failure to do so will subject the Bidder to disqualification.**

I. Contract Documents (Drawings) Changes

REMOVE and REPLACE Drawings C10 and C11 with the attached revised versions.

II. Questions & Answers

The following addresses questions received by phone and email.

Question 1: Do you have any information on the thickness of the steel? Do you have as built drawings, actual height and diameter of the bulb as well as the diameter and thickness of the stem for the existing tank?

Answer 1: Available drawings of the existing tank are attached.

NOTE: Additional questions were received on lead paint work requirements; those questions will be answered soon in Addendum 4.

This document constitutes Addendum 3 for this project.

PROVIDE WATER TANK LEVEL TRANSDUCER (SIGMA CONTROLS, INC. MODEL 90000PT PRESSURE TRANSMITTER OR APPROVED EQUAL). PROVIDE AND INSTALL TAP PIPE WITH SHUTOFF VALVE SUITABLE FOR THE PRESSURE CONDITIONS.

CONTRACTOR IS RESPONSIBLE FOR FURNISHING AND INSTALLING THE FOLLOWING COMPONENTS:

1. WATER TOWER MOUNTED BANNER PM2 SERIES RADIO FOR TANK LEVEL MONITORING COMMUNICATION
2. WATER TOWER MOUNTED BANNER RADIO YAGI SERIES ANTENNA WITH ANTENNA CABLE.

THE CONTRACTOR'S WORK SEQUENCING SHALL ALLOW FOR THE NEW TOWER TO BE BUILT, THEN THE CONTROL PANEL TO BE SWAPPED OVER. THE CONTROLS CAN BE RUN IN CONTROL TYPE 2 (PID) MODE WHILE THE PRESSURE TRANSDUCER IS INSTALLED ON THE NEW TOWER.

ACCESS TUBE LADDER

— INTERIOR LIGHTING (TYP.)
EVERY 15 VERTICAL FEET
MINIMUM. DESIGNATE
LOCATIONS IN TANK
SUBMITTAL.

— CONDENSATE CEILING
W/DRAIN AND
30" MANWAY

— COMPRESSION RING

SAMPLE TAP -

BELL DOOR

SEPARATION OF 6"
BETWEEN TOP OF FOUNDATION
AND FINAL GRADE

FINAL GRADE

Xn

EXPANSION JOINTS

SUPPORT PIPE AS NEEDED

8" SDR-35 PIPE WITH ADEQUATE
UV PROTECTION

FLANGED AND SCREENED OPENING
WITH 24 MESH NON-CORRODIBLE SCREEN

SPLASH PAD

20'

TANK FOUNDATION DESIGN BY TANK
CONTRACTOR; PROVIDE FOUNDATION
DESIGN STAMPED BY A
VERMONT-LICENSED STRUCTURAL
PROFESSIONAL ENGINEER

ELEVATED WATER STORAGE TANK
NOT TO SCALE

ENGINEERING • PLANNING •
MANAGEMENT • DEVELOPMENT
6 GREEN TREE DRIVE
SO. BURLINGTON, VT 05403
TEL: (802) 878-7661
FAX: (802) 783-7101
www.dubois-king.com
RANDOLPH, VT
SPRINGFIELD, VT
BEDFORD, NH
LACONIA, NH
© Copyright 2022 DuBois & King Inc.

PROFESSIONAL SEAL

**BID SET
NOT FOR
CONSTRUCTION**

[illegible]

VILLAGE OF
ALBURGH
1 NORTH MAIN ST.
ALBURGH, VT
(802) 796-3763

ALBURGH VILLAGE

WATER TANK
REPLACEMENT

SHEET TITLE

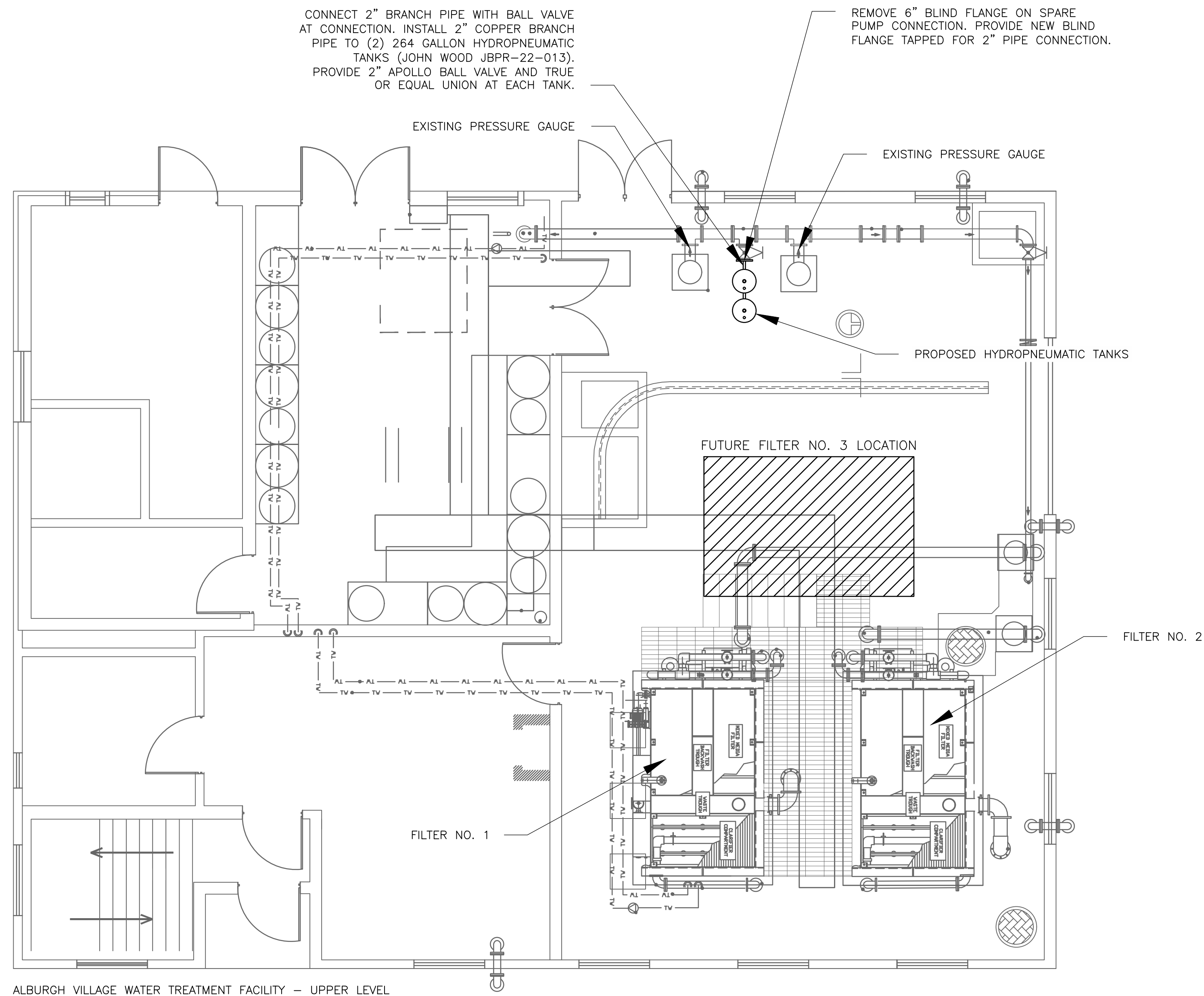
ELEVATED
STORAGE TANK
SECTION 2 OF 2

DRAWN BY AJL	DATE JAN. 2022
CHECKED BY JBA	D&K PROJECT # 225107
PROJ. ENG. GPH	D&K ARCHIVE #

SHEET NUMBER

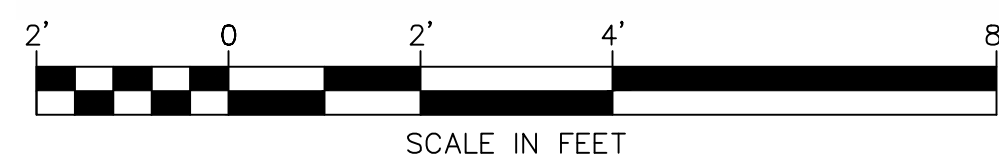
C10

SHEET 10 OF 13



ALBURGH VILLAGE WATER TREATMENT FACILITY – UPPER LEVEL

HYDROPNEUMATIC TANK PLAN

A triangle with the number 1 inside.

PROVIDE NEW DUPLEX/TRIPLEX BOOSTER PUMPS CONTROL PANEL LOCATED IN EXTERNAL MCC TO REPLACE EXISTING CONTROLS, TO INCLUDE:

1. NEMA TYPE 1 PAINTED STEEL WALL MOUNTED ENCLOSURE WITH BACK PANEL.
2. OPERATORS AND INDICATORS LOCATED ON ENCLOSURE OUTER DOOR.
3. INCOMING POWER TERMINAL BLOCKS.
4. INCOMING POWER LIGHTNING ARRESTER.
5. CONTROL POWER CIRCUIT BREAKER.
6. ALARM AUTO DIALER CIRCUIT BREAKER.
7. 24VDC CONTROL POWER SUPPLY.
8. CONTROL RELAYS AS REQUIRED.
9. PRIMEX VPAC 10 PLC/HMI WITH REQUIRED INPUTS/OUTPUTS
10. FACTORY PLC/HMI PROGRAMMING TO CUSTOMER SPECIFICATIONS
11. BANNER PM2 SERIES RADIO FOR TANK LEVEL MONITORING COMMUNICATION.
12. ONE TANK CONTROL MODE-OFF-PID CONTROL MODE SWITCH.
13. THREE PUMP HAND-OFF-AUTO SWITCHES.
14. THREE PUMP RUN PILOT LIGHTS.
15. THREE PUMP FAIL PILOT LIGHTS.
16. ALARM AUX CONTACTS TO EXISTING EXTERNALLY MOUNTED SENSAPHONE.
17. TERMINAL BLOCKS AND GROUNDING LUGS AS REQUIRED.
18. ENGRAVED NAMEPLATES AND LABELS.
19. SELF-LAMINATING WIRE NUMBERS.
20. UL LABEL 508.
21. IRE AND CONDUIT CONNECTIONS TO EQUIPMENT.
22. CONTROL PANEL PROGRAMMING TO INCLUDE TANK LEVEL MONITORING AND MODES.

CONTRACTOR WILL ALSO BE RESPONSIBLE FOR FURNISHING AND INSTALLING THE FOLLOWING COMPONENTS:

1. CONTROL BUILDING MOUNTED BANNER RADIO YAGI SERIES ANTENNA WITH 50 FOOT ANTENNA CABLE.

CONTROLS SHALL BE RUN IN CONTROL TYPE 2 (PID) MODE WHILE THE PRESSURE TRANSDUCER IS INSTALLED ON THE NEW WATER TOWER.

ELECTRICAL WORK SHALL INCLUDE WIRING BOOSTER PUMP VFDs INTO THE NEW CONTROL PANEL, WIRE CONDUIT, AND HARDWARE AS NECESSARY TO PROVIDE A COMPLETE AND FUNCTIONING CONTROL SYSTEM FULLY INTEGRATED WITH THE EXISTING PUMPS.

CONTRACTOR SHALL PROVIDE FIELD INSTALLATION, OPERATOR TRAINING INTEGRATION AND COMMISSIONING SERVICES FOR THE CONTROL SYSTEMS.

HIGH LIFT PUMP NOTES:

HIGH LIFT PUMP CONTROLS SHALL FUNCTION AS FOLLOWS:

1. EXISTING CONTROL SEQUENCE SHALL REMAIN AND BECOME CONTROL TYPE 1
2. NEW CONTROL SEQUENCE SHALL BE PROGRAMMED AND BECOME CONTROL TYPE 2
3. CONTROL TYPE 2 SHALL BE PROGRAMMED AS FOLLOWS:

- 3A. HIGH LIFT PUMPS SHALL ALTERNATE LEAD LAG.
- 3B. LEAD PUMP SHALL MAINTAIN 90 PSI AT EXISTING WATER MAIN PRESSURE SENSOR IN PLANT.
- 3C. LEAD PUMP SHALL THROTTLE FROM 84% SPEED AT 90 PSI TO 100% SPEED AT 78 PSI. LEAD PUMP SHALL TURN OFF AFTER RUNNING TWO MINUTES AT 80%.
- 3D. LAG PUMP SHALL THROTTLE FROM 85% SPEED AT 85 PSI TO 100% SPEED AT 75 PSI. LAG PUMP SHALL TURN OFF AT 85 PSI.

CONTROL SEQUENCE TYPE 2 SHALL BE FOR SHORT-TERM USE IF THE TANK NEEDS TO BE SHUT DOWN OR DRAINED FOR MAINTENANCE OR INSPECTION. WATER CONSERVATION METHODS WILL BE REQUIRED DURING CONTROL TYPE 2 USAGE.

NOTE:

THIS PLAN WAS DEVELOPED USING DRAWING TITLED "VILLAGE OF ALBURGH - WATER
TREATMENT FACILITY - IMPROVEMENTS - ALBURGH, VERMONT" SHEET 6a OF 37 BY
PHELPS ENGINEERING, INC., DATED 4/18/11.

ENGINEERING • PLANNING •
MANAGEMENT • DEVELOPMENT

6 GREEN TREE DRIVE
SO. BURLINGTON, VT 05403
TEL: (802) 878-7661
FAX: (802) 783-7101
www.dubois-king.com
RANDOLPH, VT
SPRINGFIELD, VT
BEDFORD, NH
LACONIA, NH

© Copyright 2012 DuBois & King Inc.

PROFESSIONAL SEAL

[illegible]

VILLAGE OF
ALBURGH
1 NORTH MAIN ST.
ALBURGH, VT
(802) 796-3763

ALBURGH VILLAGE

WATER TANK
REPLACEMENT

SHEET TITLE	
-------------	--

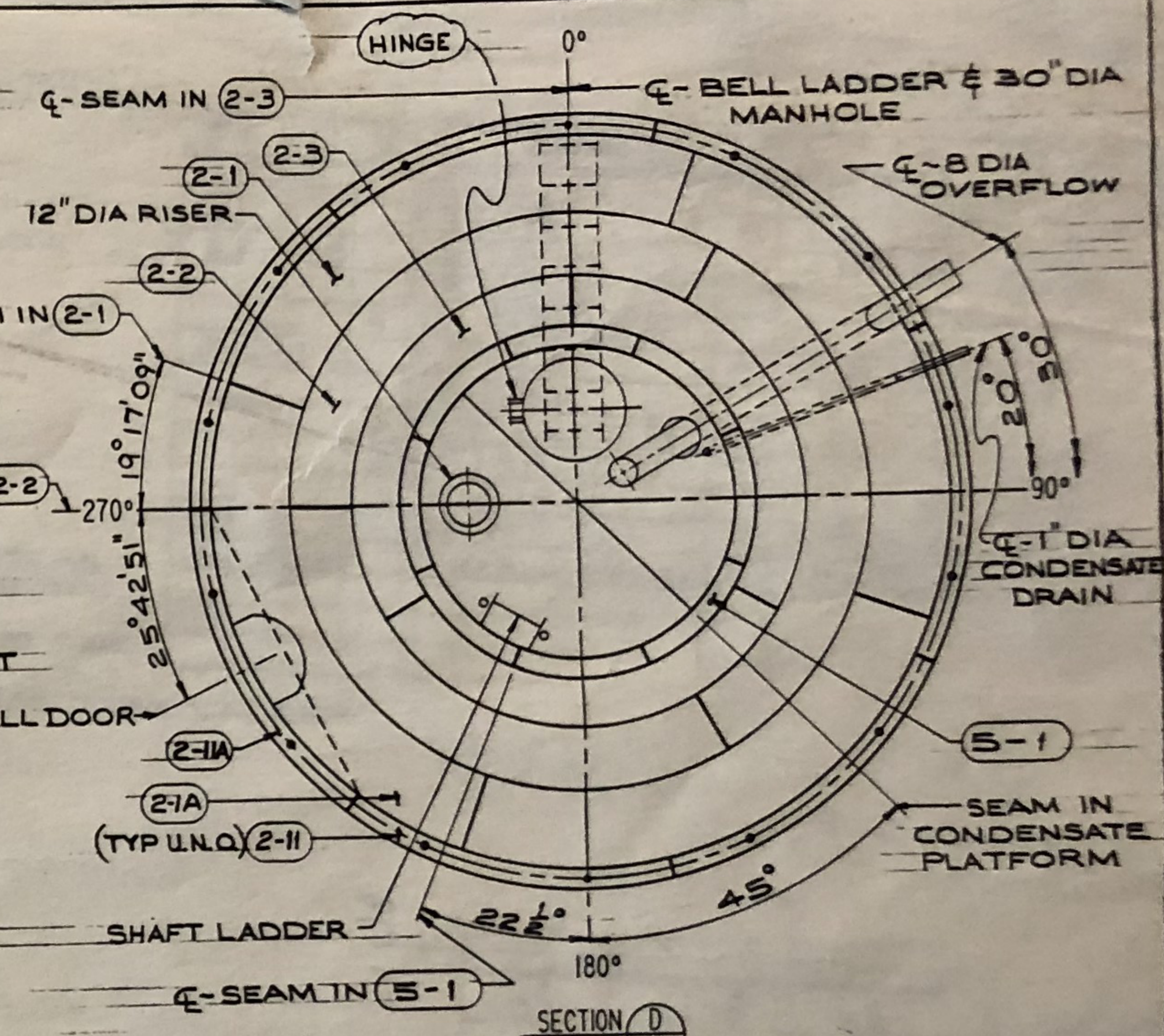
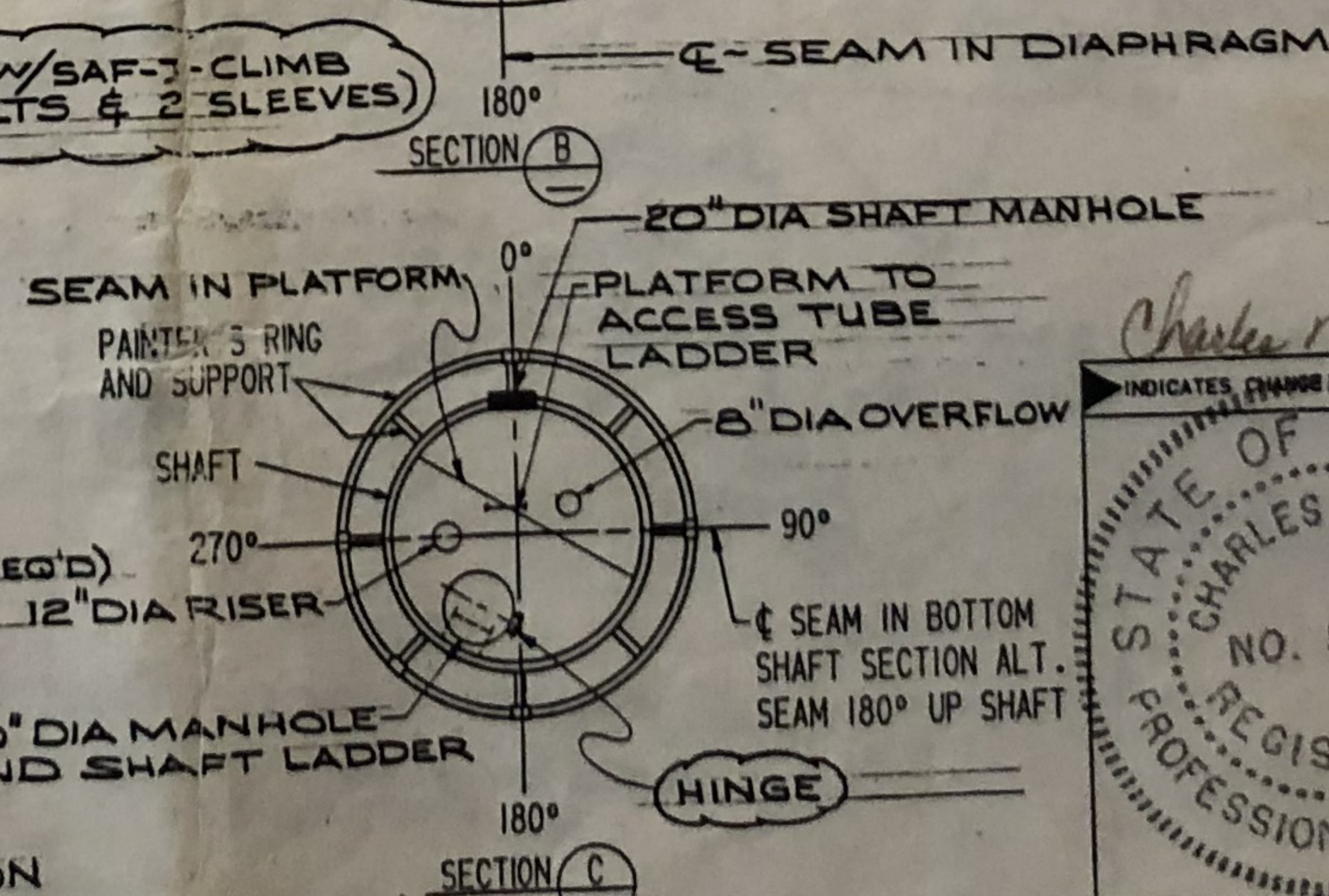
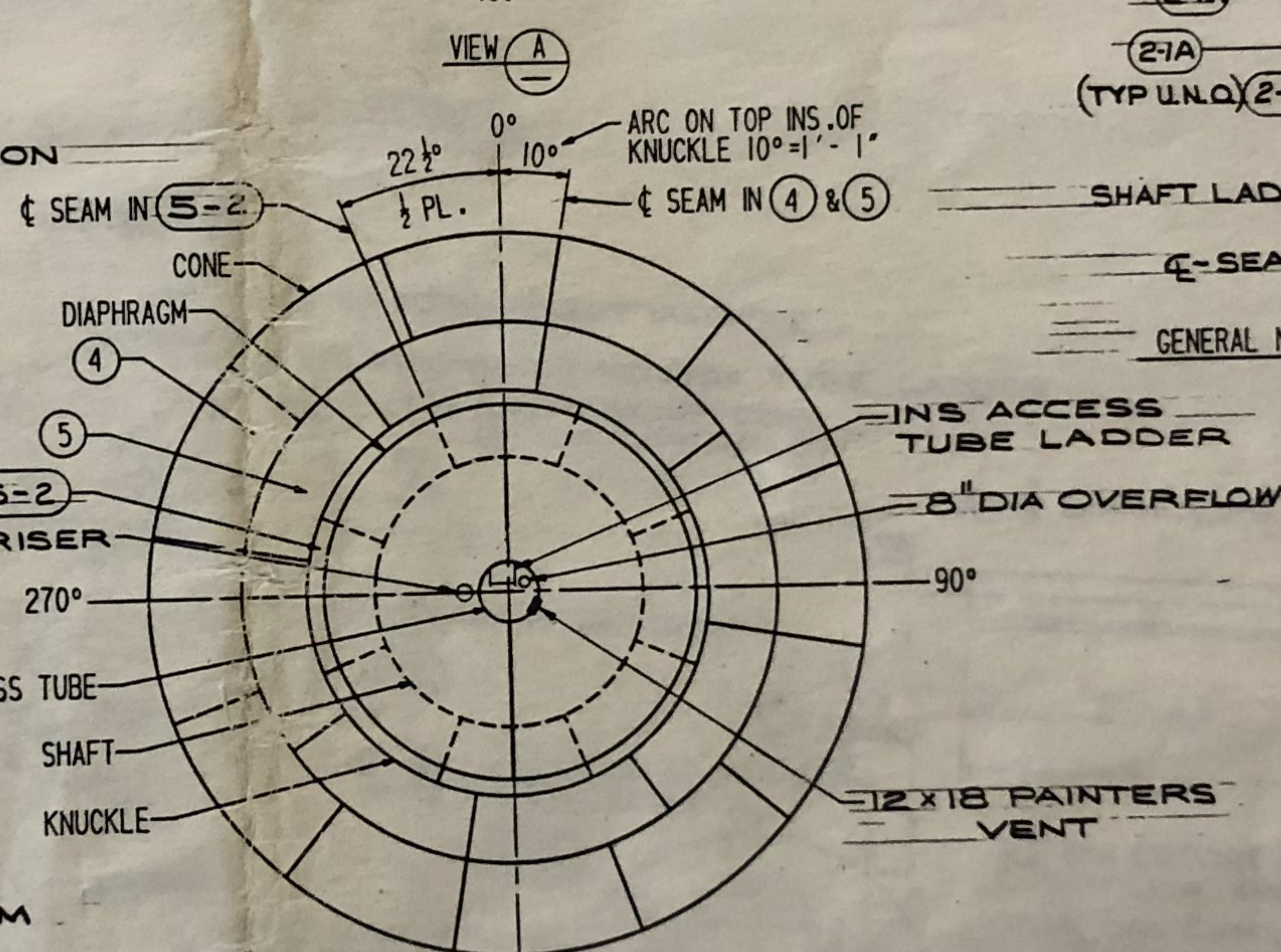
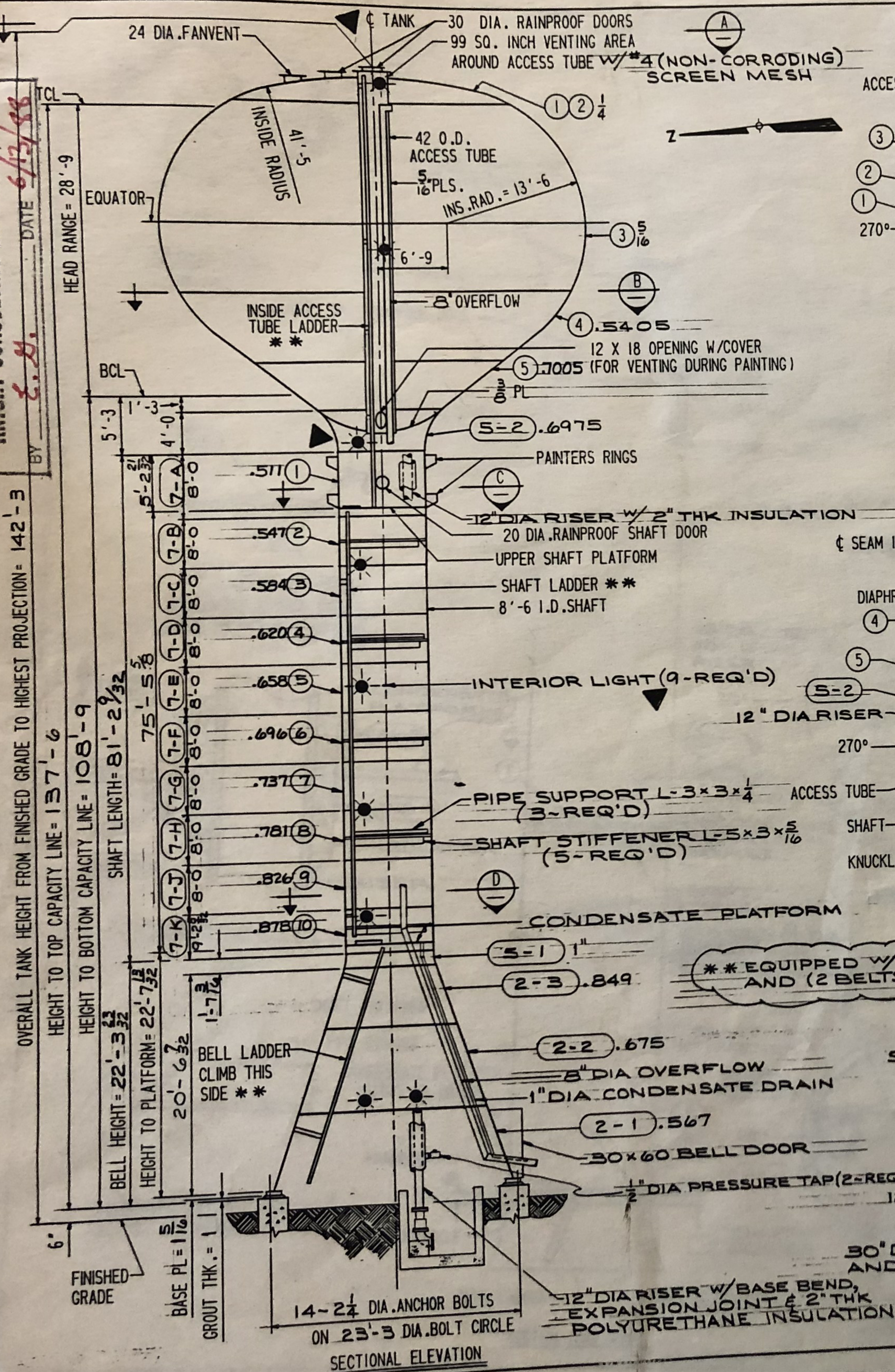
PNEUMATIC TANK PLAN

DRAWN BY AJL	DATE JAN. 2022
CHECKED BY JBA	D&K PROJECT # 225107
PROJ. ENG. GPH	D&K ARCHIVE #

SHEET NUMBER	
--------------	--

C11

OVERALL TANK HEIGHT FROM FINISHED GRADE TO HIGHEST PROJECTION = 142'-3"
HEIGHT TO TOP CAPACITY LINE = 137'-6"



GENERAL NOTES

SPECIFICATIONS - AWWA D100-84 & CUST. SPEC.

SERVICE - MUNICIPAL WATER

MATERIAL - PL=A283-C (OR A36) STRUCTURAL - A36

INSPECTION - MILL= NO SHOP= YES FIELD= YES

ALL BUTT WELDS TO BE 100% FUSION

SANDBLAST - YES (IN FIELD)

PAINT - SEE INSTRUCTION SHEET (S)

STERILIZATION - YES

WIND - 125 MPH SNOW LOAD - 50 PSF

SEISMIC ZONE 2 SECTION CORROSION ALLOWANCE - 1/8" (SURFACES)

1. PEEN ANCHOR BOLTS AFTER TIGHTENING TO PREVENT EASY REMOVAL OF NUTS.

2. DETAILS IN ELEVATION HAVE BEEN ROTATED INTO PLANE OF PROJECTION.
SEE SECTIONAL VIEWS AND DWG. #20 FOR TRUE ORIENTATION.

3. GROUT UNDER BASE PLATE BEFORE FILLING TANK WITH WATER. FILL SPACE BETWEEN ANCHOR BOLT AND HOLE IN BASE PLATE WITH GROUT TO AVOID WATER POCKETS.

4. TANK LEVEL SURVEY IS REQ'D BY OTHERS

SUPPLIER'S/ PURCHASER'S NO. 071779

GENERAL PLAN

200 MG X 108' - 9 BCL

WATERSPHEROID

CUSTOMER'S NO. _____

BY JRJ CND 736 DATE 4-22-8
P. B. BUREAU

ENGINEERING SUPERVISOR

THIS DRAWING HAS BEEN PREPARED FOR AND IS THE PROPERTY OF COT AND IS
TO BE USED ONLY IN CONNECTION WITH PERFORMANCE OF WORK BY COT. REPRODUCTION
FOR ANY OTHER PURPOSE OR IN ANY MANNER FOR ANY OTHER PURPOSE IS EXPRESSLY FORBIDDEN

tion in whole or in part for any other purpose in the

10

PROPERTY OF FBI AND IS

ALL INFORMATION CONTAINED HEREIN IS UNCLASSIFIED EXCEPT WHERE SHOWN OTHERWISE

Completed 10/10/10

