

ADDENDUM NO. 1

August 14, 2023

528137

**RE: EDMUNDS SCHOOL ENCLOSURE REPAIRS &
MECHANICAL SYSTEM UPGRADES**

FROM: DuBOIS & KING, INC.
36 Penn Plaza
Bangor, Maine 04401
(207) 573-4130

TO: Prospective Bidders

This Addendum forms part of the Contract Documents and modifies the original Bidding Documents issued by the Maine Department of Education for the Edmunds School Enclosure Repairs & Mechanical System Upgrades project dated July 21, 2023. **Acknowledge receipt of this Addendum in the space provided on the Bid Form. Failure to do so will subject the Bidder to disqualification.**

I. Pre-Bid Meeting

A Pre-Bid meeting was held at the Edmunds School on August 3, 2023 at 3:00 p.m. Attendees are listed on the attached Pre-Bid Meeting Attendance Log. **The following addresses questions received at the pre-bid meeting, as well as project document revisions.**

II. Contract Documents Changes - Drawings

- 1. Sheet SP101 – SITE PLAN**
 - A. ADD sheet in its entirety
- 2. Sheet BEC1.1 – COVER SHEET**
REMOVE and REPLACE in its entirety
- 3. Sheet BEA1.1 – DEMOLITION & PROPOSED PARTIAL FLOOR PLAN AA**
REMOVE and REPLACE in its entirety
- 4. Sheet BEA1.3 – ROOF PLAN**
REMOVE and REPLACE in its entirety
- 5. Sheet BEA2.0 – ELEVATIONS DEMOLITION**
REMOVE and REPLACE in its entirety
- 6. Sheet BEA6.1 – WINDOW TYPES SCHEDULE & DETAILS**
REMOVE and REPLACE in its entirety

7. **Sheet BEA6.2 – DOOR FRAME, HARDWARE SCHEDULE, DETAILS, BIO-REMEDIAL ASSESSMENT**
REMOVE and REPLACE in its entirety

III. Contract Documents (Specification) Changes

1. **Specification 00 11 13 NOTICE TO CONTRACTORS**

- A. **REMOVE and REPLACE in its entirety. Bid due date changed from AUGUST 15, 2023 to AUGUST 17, 2023.**

2. **Specification 00 41 13 CONTRACTOR BID FORM**

- A. REMOVE and REPLACE in its entirety. Alternate Bid is included in this project.

3. **Specification 01 23 00 ALTERNATES**

- A. ADD in its entirety. Alternate Bid is included in this project.

IV. Questions & Answers

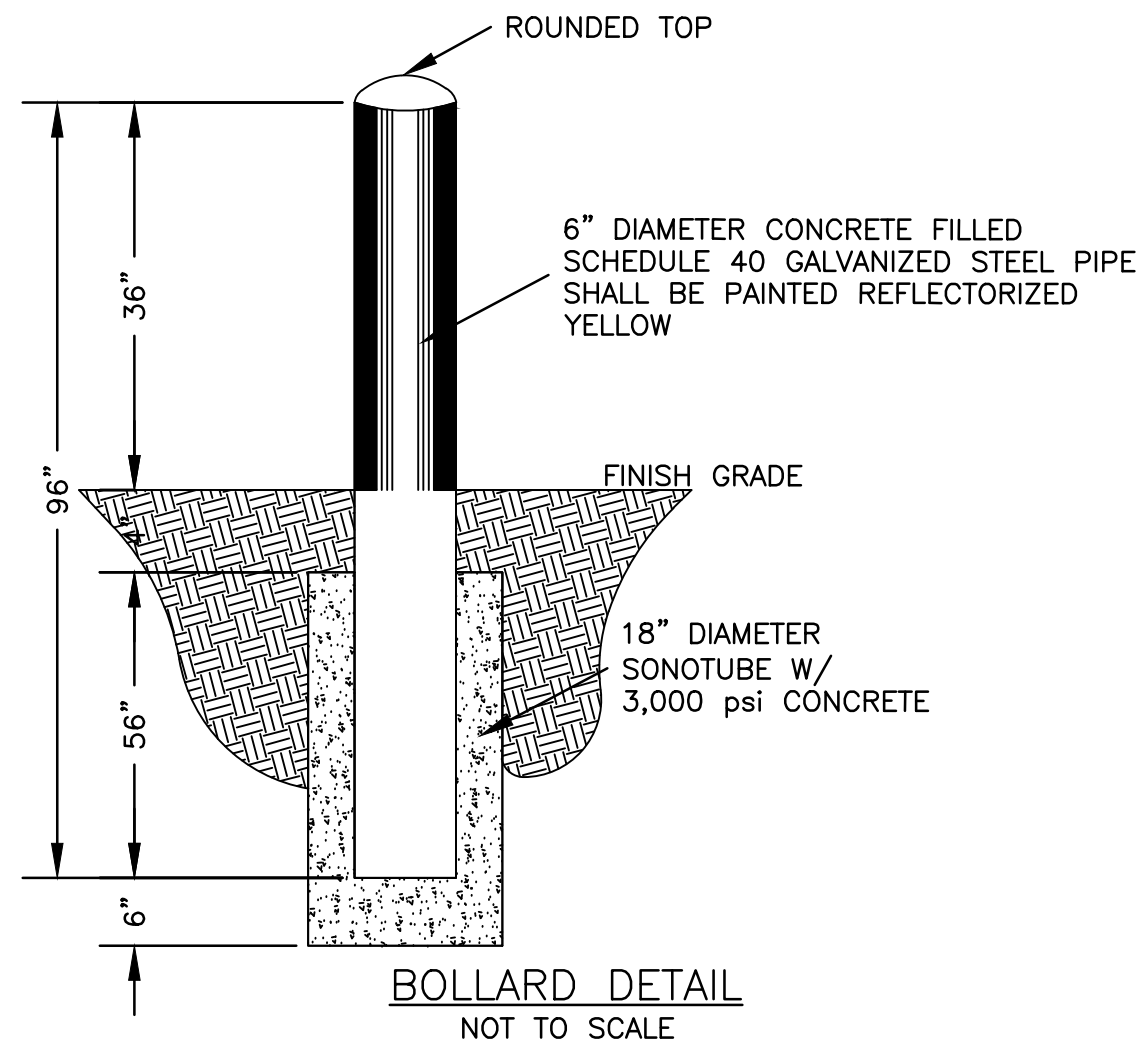
1. **Will you be accepting window alternatives on this project?**

See Paragraph 17 - SUBSTITUTIONS in Specification 00 72 13 GENERAL CONDITIONS.

V. Additional Information

1. None

This document constitutes Addendum 1 for this project.



NOTES
1. ALL EXISTING UNDERGROUND UTILITY LOCATIONS SHOWN ARE APPROXIMATE. SITE CONTRACTOR SHALL VERIFY-IN-FIELD UNDERGROUND SITE UTILITIES PRIOR TO EXCAVATION.

DuBois & King inc.
6 GREEN TREE DRIVE
SO. BURLINGTON, VT 05403
TEL: 802.878.7661
www.dubois-king.com
VERMONT
NEW HAMPSHIRE
MAINE AND NEW YORK
© Copyright 2023 DuBois & King Inc.

PROFESSIONAL SEAL

NO.	DATE	DESCRIPTION	BY	CHK'D
1	08/14/2023	ADDENDUM 01	JSK	JSK



NO.	DATE	DESCRIPTION	BY	CHK'D
1	08/14/2023	ADDENDUM 01	JSK	JSK

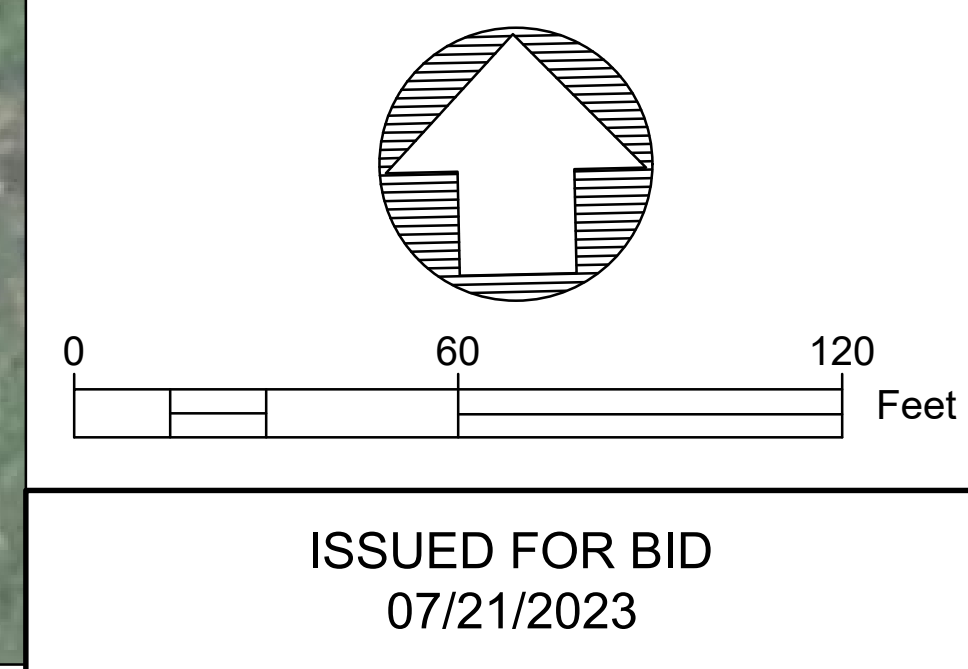
MAINE DOE
AUGUSTA, ME

EDMUNDS SCHOOL
ENCLOSURE REPAIRS &
MECHANICAL SYSTEMS
UPGRADES
21 HARRISON RD
DENNYVILLE, ME 04628

SHEET TITLE
SITE PLAN

DRAWN BY	DATE
CHECKED BY	D&K PROJECT #
PROJ. ENG.	D&K ARCHIVE #

SHEET NUMBER
SP101



I:\528137 Edmunds School Building Enclosure & Mechanical Drawings\Site\528137.dwg 8/14/2023 11:21 AM

EDMUNDS CONSOLIDATED SCHOOL

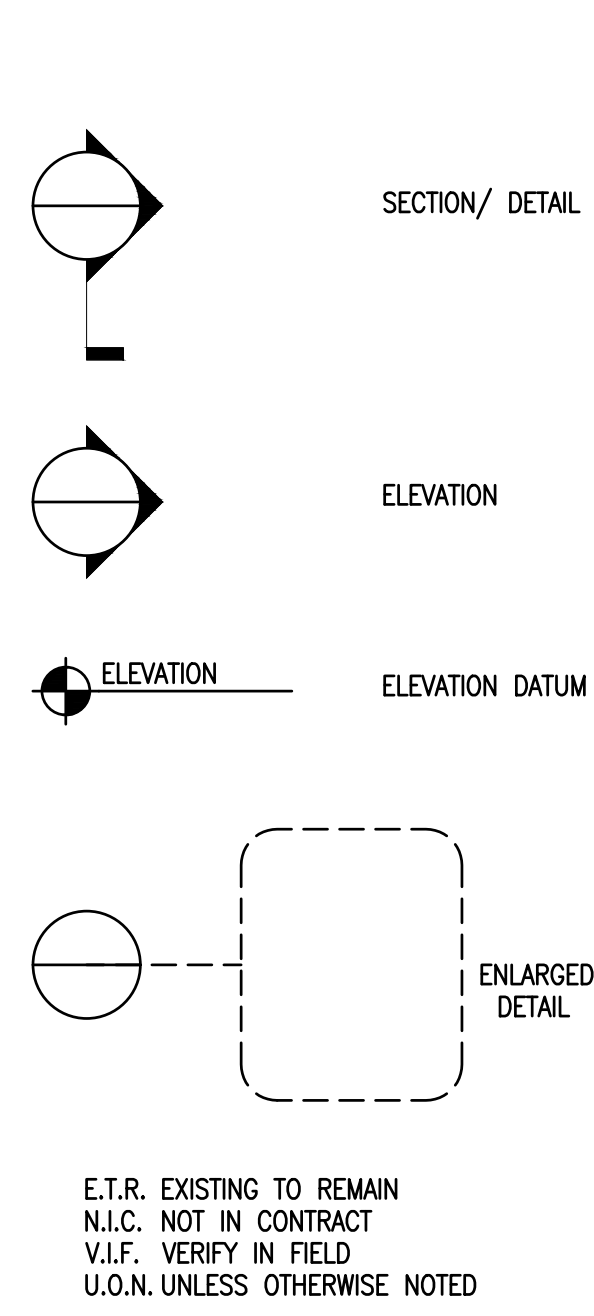
ENCLOSURE REPAIRS

LeMessurier.

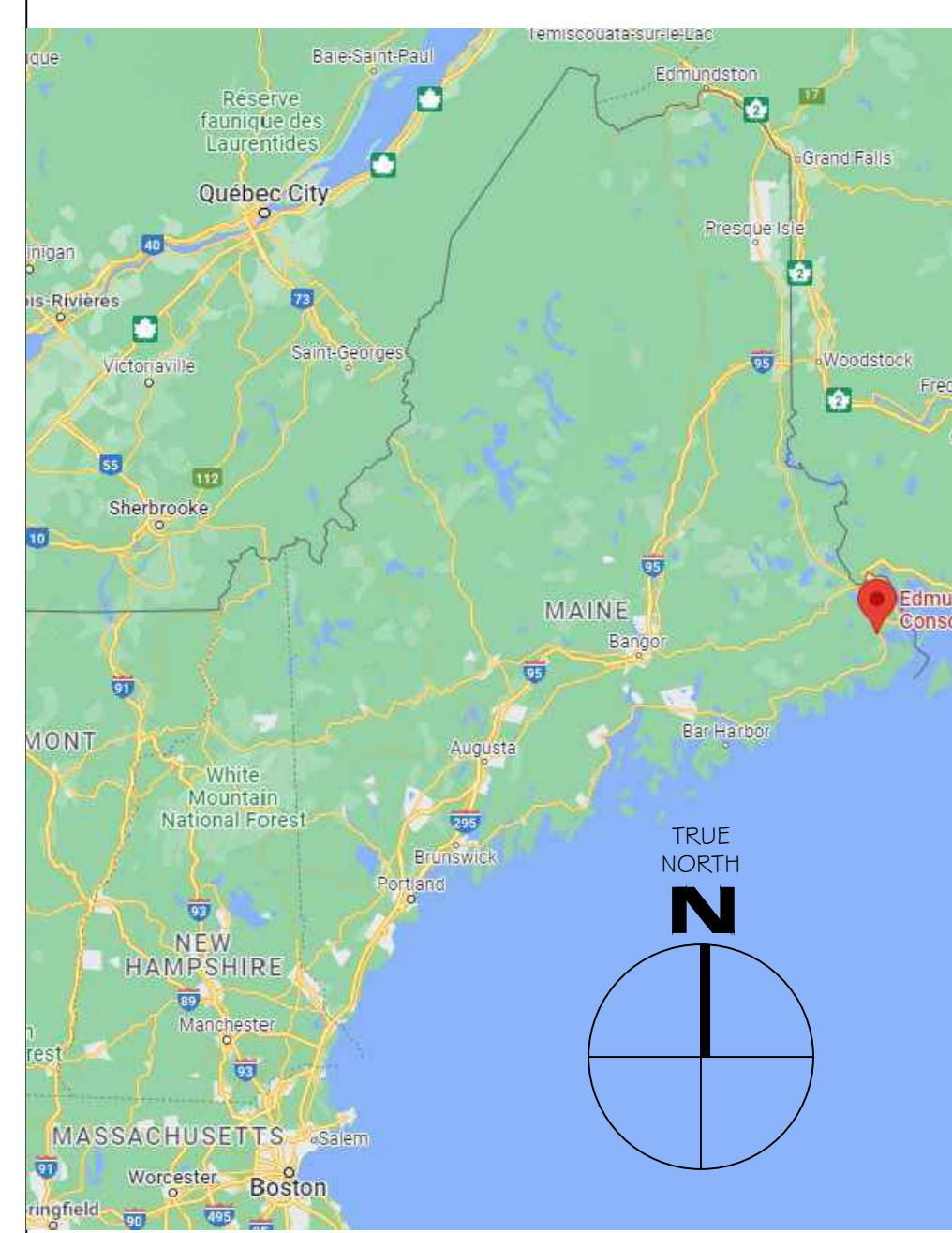
1 MADISON ST. FLOOR 2
SOUTH PORTLAND MAINE. 04106
PHONE: 207.400.0086

PROFESSIONAL SEAL

GENERAL SYMBOL LEGEND



LOCATION



GENERAL CONSTRUCTION NOTES

GENERAL NOTES

- ALL REPAIR WORK WILL BE COMPLETED IN ACCORDANCE WITH CURRENT PRACTICES IN THE CONSTRUCTION INDUSTRY, ALL NATIONAL, STATE, LOCAL BUILDING CODES INCLUDING, BUT NOT LIMITED TO THE MAINE UNIFORM BUILDING AND ENERGY CODE.
- SUBMITTALS:** CONTRACTOR MUST SUBMIT ALL MATERIALS USED FOR CONSTRUCTION WORK FOR APPROVAL PRIOR TO THE START OF WORK. ALL PRODUCT SUBMITTALS MUST HAVE A COVER SHEET INDICATING THAT IT IS A SUBMITTAL AND ALL THE PERTINENT DATA NEEDED TO BE REVIEWED. THIS SUBMISSION MUST INCLUDE A SUBMITTAL SCHEDULE. CONTRACTOR IS RESPONSIBLE FOR THE ACCURACY OF THE TERM "MATCH EXISTING" AND WILL BE EXPECTED TO PROVIDE TO THIS LEVEL OF "STANDARD OF CARE" AS IT RELATES TO MAINTAINING INTENT OF HISTORICAL RESTORATION.
- SUBMITTALS WILL HAVE A MINIMUM OF ONE WEEK FOR REVIEW. A SUBSTITUTION IS NOT A SUBMITTAL. A SUBSTITUTION REQUEST MUST HAVE A COVER SHEET INDICATING IT IS A "REQUEST FOR SUBSTITUTION". ALL PERTINENT DATA FOR THE SUBSTITUTED PRODUCT AND THE SPECIFIED PRODUCT MUST BE PART OF THE REQUEST. SUBMITTALS WILL ONLY BE REVIEWED WITH CONTRACTORS STAMP APPROVAL AND DATE. REQUEST MADE WITHOUT ALL THE INFORMATION INDICATED WILL BE REJECTED. REQUESTS FOR SUBSTITUTION WILL HAVE A MINIMUM OF TWO WEEKS FOR REVIEW. REFER TO ARCHITECTS SPECIFICATION OF SUBMITTALS.
- CONTRACTOR TO COORDINATE ALL WORK WITHIN SUPPLEMENTAL SCHEDULE AND WITH A/E OF RECORD SCHEDULE AS PER SPECIFICATIONS WITH OTHER SUB-TRADES, AND WITH OWNER TO MINIMIZE EXPOSURE TO PEDESTRIANS, VEHICLES, AND ADJACENT BUILDINGS.
- CONTRACTOR TO VERIFY AND DOCUMENT EXISTING CONDITIONS WITH CONTRACT DOCUMENTS PRIOR TO COMMENCEMENT OF WORK. CONTRACTOR TO NOTIFY A/E OF ANY CONFLICTS IN THE WORK OUTLINED ON CONSTRUCTION DOCUMENTS PRIOR TO THE COMMENCING WORK. NOTIFY A/E PRIOR TO COMMENCING WORK.
- CONTRACTOR IS RESPONSIBLE FOR VERIFYING ALL ITEMS ON THE BUILDING THAT MAY INTERFERE WITH THE WORK PROPOSED IN THESE DRAWINGS. ITEMS NOT SHOWN ON THE DRAWINGS THAT MUST BE REMOVED OR ALTERED EVEN IN A TEMPORARY FASHION MUST BE ACCOUNTED FOR PRIOR TO THE START OF WORK. IF CONTRACTOR IS UNSURE OF A CERTAIN SITUATION PLEASE CONTACT A/E BEFORE PROCEEDING.
- CONTRACTOR TO VERIFY ALL DIMENSIONS AND QUANTITIES INDICATED ON BID DOCUMENTS AND ASSESS ADDITIONAL QUANTITIES AS NOTED AGAINST TRANSPORTING DAMAGE, REMOVAL AND EXTRACTING. CONTRACTOR SHALL CARRY QUANTITIES AND SQUARE FOOTAGE SUFFICIENT TO COMPLETE THE INDICATED TASK.
- THE CONTRACTOR IS RESPONSIBLE FOR CONTROLLING ANY ACCESS TO THIS STORAGE AREA. (SEE EXCEPTION.) (EXCEPTION: IF ANY ELEMENTS PURCHASED, NEW OR EXISTING BY OWNER ARE TO BE STORED OFF SITE, G.C. TO PROVIDE COMPLETE ACCESS TO OWNER IN COMPLIANCE WITH A/E OR RECORD SPECIFICATIONS FOR RETAINING OWNERS PROPERTY OFF SITE.
- THE CONTRACTOR IS RESPONSIBLE FOR PROVIDING SCAFFOLDING AND THE COORDINATION WITH THE BUILDING ENCLOSURE SCAFFOLDING IS TO HAVE A STAIR TOWER AND TO COMPLY WITH ALL LOCAL, STATE, FEDERAL CODES AND SAFETY STANDARDS ECT.
- CONTRACTOR TO MAINTAIN A CLEAN CLEAR FREE OF CONSTRUCTION DEBRIS ON A DAILY BASIS. CONTRACTOR IS TO RESTORE/ REPLACE EXISTING DAMAGE TO GROUNDS SURROUNDING THE PROJECT.
- CRITICAL ENTRANCES MUST REMAIN SAFE AND OPERATIONAL. THE G.C. SHALL COORDINATE AND PHASE ALL WORK THROUGHOUT CONSTRUCTION TO PROVIDE AND MAINTAIN A SECURE FACILITY TEMPORARY "SECURE PANELS" SHALL BE CONSTRUCTED, MOVED AND MAINTAINED THROUGHOUT THE CONSTRUCTION DURATION TO PREVENT UNAUTHORIZED ACCESS DAILY AFTER CONSTRUCTION ACTIVITIES. REFER TO SHEETS A1.3 AND A1.4 FOR ADDITIONAL INFORMATION.
- SAFE - SECURE - STORAGE TO PROVIDED ON SITE FOR THE SAFE / SECURE PROTECTION OF BUILDING ELEMENTS TO BE REINSTALLED, RETAINED, OR INSTALLED NEW, NOT LIMITED TO ANY OF THE BUILDING ELEMENTS OR NEW BUILDING MATERIALS TO BE EMPLOYED WITHIN THE DURATION OF THIS PROJECT.
- CONTRACTOR TO PROVIDE AND MAINTAIN AND SECURE ON SITE STORAGE, AGAINST THE FOLLOWING BUT NOT LIMITED TO: THEFT, WEATHER, DAMAGE, VANDALISM, UNAUTHORIZED ACCESS.
- ANY AND ALL ACCESSORY ITEMS ATTACHED TO OR PENETRATING THE BUILDING'S ENCLOSURE IMPACTING THE SCOPE OF WORK, REQUIRING ITS RELOCATION, SUCH AS INCLUDING BUT NOT LIMITED TO: ELECTRICAL SERVICE, FIRE ALARM, SECURITY, LIGHTING, SIGNAGE, PLUMBING, MECHANICAL, TO BE COORDINATED WITH THE OWNER AND OR THE A/E OF REC. PRIOR TO ITS RELOCATION.
- DISCONNECTION OF SERVICES TO BE APPROVED BY OWNER PRIOR TO DISCONNECTION.
- DURATION OF DISCONNECTION TO BE COORDINATED AND APPROVED IN WRITING BY: OWNER AND LOCAL AUTHORITY HAVING JURISDICTION.

QUALITY CONTROL NOTES

A/E WILL PERFORM REGULAR INSPECTIONS OF THE RESTORATION WORK OVER THE DURATION OF THE PROJECT. INSPECTIONS WILL BE CONSIDERED AS PART OF THE "PUNCH LIST" INSPECTION PROCESS. ITEMS, WHICH DO NOT FOR CONFORM WITH THE INTENT OF THE CONSTRUCTION DOCUMENTS, SPECIFICATIONS OR INDUSTRY STANDARDS WILL BE MARKED WITH FLORESCENT MARKER WITH INSTRUCTIONS GUIDING THE CONTRACTOR WHAT TO CORRECT. FOR SUBSEQUENT INSPECTIONS, AS CORRECTIONS ARE COMPLETED, A/E, WILL INSPECT AGAIN AND REMOVE THE TAPE IF SATISFIED. ONLY THE A/E OR AN AGENT OF IS AUTHORIZED TO REMOVE THE FLORESCENT MARKER PLEASE ASK QUESTIONS. A/E IS ALWAYS WILLING TO PROVIDE CLARIFICATION TO THESE DOCUMENTS AS NEEDED WITHIN REASON. PLEASE SUBMIT ALL QUESTIONS IN WRITING IN THE FORM OF A "REQUEST FOR INFORMATION" (RFI). ALL REQUESTS WILL BE RESPONDED TO AS PER RFI TIME TABLES.

IT IS THE RESPONSIBILITY OF THE GENERAL CONTRACTOR TO CONFORM TO ALL MANUFACTURERS INSTALLATION GUIDELINES AND SPECIFICATIONS. ANY DEVIATION FROM THIS DIRECTIVE MUST BE APPROVED BY A/E IN WRITING PRIOR TO INSTALLATION.

SPECIFIC PROJECT NOTES:

ALL SEALANT JOINTS BETWEEN 1/4" AND 1/2" TO HAVE BACKER ROD AND SEALANT UNLESS OTHERWISE NOTED (UON).
ALL WINDOWS ARE TO HAVE PAN FLASHING WITH BACK AND END DAMS.
CONTRACTOR TO VERIFY ALL WINDOW ROUGH OPENINGS AND TO MODIFY ROUGH OPENINGS AS NEEDED TO RECEIVE NEW WINDOWS.

PRODUCTS USED IN THIS PROJECT:

- LP SMART SIDE SIDING - SERIES 76 SMART LOCK CEDAR TEXTURE LAP
- LP SMART SIDE TRIM - 440 SERIES SMOOTH FINISH TRIM 0.675" & 0.970" THICKNESS
- LP SMART SIDE SOFFIT - VENTED SOFFIT
- 1 X4 FURRING STRIPS
- DUPONT TYVEK COMMERCIAL WRAP (WRB)
- DUPONT TYVEK FLASHING TAPE
- DUPONT TYVEK DRAIN VENT RAIN SCREEN
- COMPOSITE WINDOW WALL
- REPLACEMENT WINDOWS - ANDERSON SERIES 200 WINDOWS DOUBLE HUNG TILT WASH
- REPLACEMENT DOOR AND FRAMES - COMMERCIAL SECURE STEEL SERVICE
- REPLACEMENT DOOR HARDWARE - GRADE 5 EXTERIOR WITH S.S. COMPONENTS
- YORK S.S FLASH VENT FOR DRAINAGE PLANE FLASHING
- YORK 304 SA FOR WINDOW HEAD JAMB AND SILL FLASHING
- YORK 304 SA FOR WINDOW PAN FLASHING
- 16 GA SS FLASHING FOR WALL BASE
- TREMCO DYMONIC 100 SEALANT
- CLOSED CELL BACKER ROD STANDARD H88
- CONCRETE PATCH- JAHN M90 BY CATHEDRAL STONE PRODUCTS OR MASTERMACO T 1060 BY BASF
- MASONRY MINERAL PAINT - KEIM EXCLUSIV COLOR TBD - (COLOR MATCHED WITH BENJAMIN MOORE COLORS) (FINAL COLOR TO BE DETERMINED)
- 600 EPDM MEMBRANE TO MATCH EXISTING COLOR - CARLISLE
- EPDM MEMBRANE PATCH TAPE-CARLISLE
- EPDM MEMBRANE SEALANT- CARLISLE
- METAL COPING - TO MATCH EXISTING
- WHITE BREAK METAL FLASHING - TO MATCH EXISTING
- 1/2" EXTERIOR CDX SHEATHING (FOR REMEDIATION)
- MINERAL WOOL INSULATION (FOR REMEDIATION)
- 5/8" TYPE X GWB TO MATCH EXISTING (FOR REMEDIATION)
- 6 MIL POLY FOR INTERIOR VAPOR BARRIER (FOR REMEDIATION)
- INTERIOR FINISHES - PAINT BENJAMIN MOORE LATEX (FOR REMEDIATION)

MASONRY PROJECT NOTES

- ENSURE ALL MORTAR INGREDIENTS ARE FRESH WITH DOCUMENTED DATES OF MANUFACTURE SUBMITTED TO LEMESSURIER FOR APPROVAL. NO LIME OR CEMENT PRODUCTS INCLUDING PATCHING MORTAR SHALL BE OLDER THAN 6 MONTHS FROM TIME OF MANUFACTURING.
- STORE ALL MASONRY MATERIAL AS PER THE RECOMMENDATIONS OF THE BRICK INDUSTRY ASSOCIATION AND THE MASONRY INSTITUTE OF AMERICA.
- HOT AND COLD WEATHER MASONRY CONSTRUCTION AND QUALITY CONTROL REQUIRE SOME ADDITIONAL ATTENTION TO CONSTRUCTION PRACTICES AND PROTECTION. ALL WORK TO CONFORM TO INSTALLATION REQUIREMENTS SET FORTH BY THE MASONRY INSTITUTE OF AMERICA.
- CLEAN AS PER MANUFACTURERS PRODUCT RECOMMENDATIONS.
- CONTRACTOR TO STRIP ALL EXISTING PAINT FROM BRICK AND CONCRETE MASONRY AT INDICATED WORK AREAS.
- CONTRACTOR TO PAINT ALL THE CONCRETE MASONRY AT COMPLETION OF THE REPAIR WORK.

SCOPE OF WORK

BASICS OF DESIGN

DEMOLITION

BASE-

- DEMO / REMOVE EXISTING BOARD & BATT AND TRIM ONLY.
- REMOVE EXISTING WINDOW ASSEMBLY INCLUDE: INTERIOR TRIM AND GYPWB JAMB/HEADER RETURN (ALL EXTERIOR WINDOWS)
- REMOVE EXISTING DOOR/FRAME/ HARDWARE ASSEMBLY INCLUDE: INTERIOR TRIM AND GYPWB SILL/JAMB/HEADER RETURN (ALL EXTERIOR DOORS)
- (ALL INDICATED AREAS OF REMEDIATION) AIR AND MOISTURE BARRIER,BATT INSUL HAS BEEN REMOVED.WAS STUDS AND EXTERIOR SHEATHING HAVE BEEN MOLD TREATED.

NEW INSTALLATION

BASE =

- NEW / INSTALL NEW -PROPOSED ENGINEERED TRIM AND SIDING REFER TO MATERIAL KEY OPTIONS INCLUDE: RAIN SCREEN AND FURRING STRIPS OVER 2" RIGID INSULATION.
- NEW / INSTALL NEW WINDOW ASSEMBLY - REFER TO WINDOW SCHEDULE INCLUDE: INTERIOR TRIM AND GYPWB JAMB/HEADER RETURN
- NEW / INSTALL NEW DOOR/FRAME/ HARDWARE ASSEMBLY - REFER TO DOOR/FRAME HARDWARE SCHEDULE INCLUDE: INTERIOR TRIM AND GYPWB SILL/JAMB/HEADER RETURN.
- NEW / INSTALL VINYL SIDING AND TRIM - REFER TO MATERIAL KEY OPTIONS
- (INDICATED AREAS OF REMEDIATION) INCLUDE: INSTALLATION OF AIR/MOISTURE BARRIER, PLYWD SHEATHING,BATT INSUL AND INDICATED PORTIONS OF GWB.

DRAWING NUMBER	DRAWING TITLE	SCHEMATIC DESIGN 01/04/2022	DD 100% 01/04/2022	CLIENT REVIEW 01/11/2023	CD 95% REVIEW 05/24/2023	BID 100% DOCUMENTS 07/27/2023
BEC1.1	COVER SHEET					
BEA1.1	DEMOLITION & PROPOSED PARTIAL FLOOR PLAN AA					
BEA1.2	DEMOLITION & PROPOSED PARTIAL FLOOR PLAN BB					
BEA1.3	DEMOLITION & PROPOSED PARTIAL ROOF PLAN					
BEA2.0	ELEVATIONS DEMOLITION					
BEA2.1	ELEVATIONS PROPOSED FACADE					
BEA2.2	ELEVATIONS DEMOLITION & PROPOSED FACADE					
BEA5.1	EXISTING & DEMOLITION PARTIAL SECTIONS & DETAILS					
BEA5.2	PROPOSED PARTIAL SECTIONS DETAILS					
BEA6.1	WINDOW TYPES SCHEDULE & DETAILS					
BEA6.2	DOOR TYPES,SCHEDULE ,BIO-REMEDIAL ASSESSMENT					

REQUIRED MOCKUPS

- FULL PROPOSED WALL ASSEMBLY INCLUDING WINDOW WITH ALL TRIM AND FLASHING, VAPOR BARRIER, WOOD STUDS, INTERIOR BATT INSULATION, SHEATHING, AIR AND WATER BARRIER, EXTERIOR POLYISO BOARD INSULATION, RAINSCREEN AND LP SMART SIDING AND TRIM.
- DOOR AND HARDWARE IN FRAME
- CONCRETE PAINT SEALANT 2 LINEAR FEET - PROVIDE PULL TEST RESULTS SUBMITTAL PRIOR TO WORK.

DESIGN CRITERIA

EXISTING SCHOOL: WOOD CONSTRUCTION WITH WOOD AND VINYL SIDING

ISSUED FOR BID
NOT FOR CONSTRUCTION
07-21-23

BID 100% DOCUMENTS

TSD	R/JH	R/JH	BID DOCUMENTS	ADDENDUM 1	NO.	DATE	DESCRIPTION	BY	CHK'D



AUGUSTA, ME

EDMUNDS SCHOOL
BUILDING ENCLOSURE &
MECHANICAL SYSTEMS
UPGRADES

21 HARRISON RD
DENNISVILLE, ME 04628

SHEET TITLE

COVER SHEET

DRAWN BY R/JH DATE 10/30/2022

CHECKED BY DCM D&K PROJECT # 528137 LeM 21.0321

PROJ. ENG. N/A D&K ARCHIVE #

SHEET NUMBER

BEC1.1

SHEET 1 OF 11

DEMOLITION

BASE=

- DEMO / REMOVE EXISTING BOARD & BATT AND TRIM ONLY.
 - REMOVE EXISTING WINDOW ASSEMBLY INCLUDE; INTERIOR TRIM AND GYPWB JAMB/HEADER RETURN (ALL EXTERIOR WINDOWS)
 - REMOVE EXISTING DOOR/FRAME/ HARDWARE ASSEMBLY INCLUDE; INTERIOR TRIM AND GYPWB SILL/JAMB/HEADER RETURN (ALL EXTERIOR DOORS)
 - (ALL INDICATED AREAS OF REMEDIATION ARE COMPLETE) AIR AND MOISTURE BARRIER,BATT INSUL AND GWB HAVE BEEN REMOVED.
- ALT 1 =**
- REMOVE EXISTING VINYL SIDING AND TRIM.

NEW INSTALLATION

BASE =

- NEW / INSTALL NEW -PROPOSED ENGINEERED TRIM AND SIDING REFER TO MATERIAL KEY OPTIONS INCLUDE; RAIN SCREEN AND FURRING STRIPS OVER 2" RIGID INSULATION.
- NEW / INSTALL NEW WINDOW ASSEMBLY - REFER TO WINDOW SCHEDULE INCLUDE; INTERIOR TRIM AND GYPWB JAMB/HEADER RETURN
- NEW / INSTALL NEW DOOR/FRAME/ HARDWARE ASSEMBLY - REFER TO DOOR/FRAME HARDWARE SCHEDULE INCLUDE; INTERIOR TRIM AND GYPWB SILL/JAMB/HEADER RETURN.
- NEW / INSTALL VINYL SIDING AND TRIM - REFER TO MATERIAL KEY OPTIONS
- (INDICATED AREAS OF REMEDIATION) INCLUDE; INSTALLATION OF AIR,MOISTURE BARRIER, PLYWD SHEATHING,BATT INSUL AND INDICATED PORTIONS OF GWB.

ALT 1=

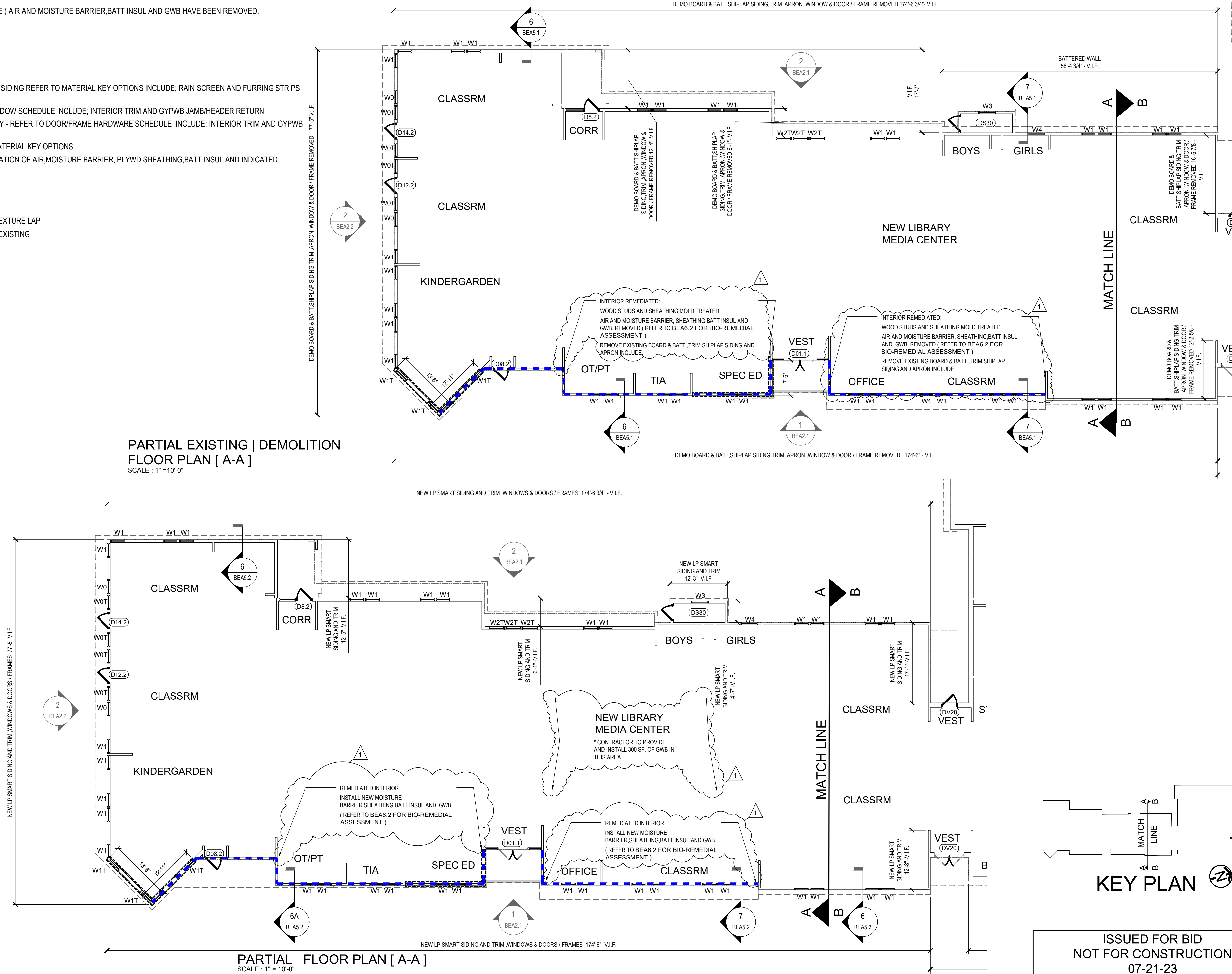
- INSTALL SMARTSIDE @ SERIES 76 SMART LOCK CEDAR TEXTURE LAP
- REPLACE BREAK METAL FLASHING AND TRIM TO MATCH EXISTING

LEGEND

BLUE DASHED LINE INDICATES AREA OF NEW 12" RAISED MASONRY BASE REFER TO 6A / BEA 5.2

PARTIAL EXISTING | DEMOLITION FLOOR PLAN [A-A]
SCALE : 1" = 10'-0"

PARTIAL FLOOR PLAN [A-A]
SCALE : 1" = 10'-0"



6 GREEN TREE DRIVE
SO. BURLINGTON, VT 05403
TEL: 802.878.7661
www.dubois-king.com

VERMONT
NEW HAMPSHIRE
MAINE AND NEW YORK
© Copyright 2022 DuBois & King Inc.

LeMessurier.
1 MADISON ST., FLOOR 2
SOUTH PORTLAND MAINE, 04106
PHONE: 207-400-0086

PROFESSIONAL SEAL

BID 100% DOCUMENTS

TSD	R/JH	R/JH	NO.	DATE	DESCRIPTION	BY	CK'D
0	07/21/2023						
1	08/14/2023				APPENDUM 1		



AUGUSTA, ME
EDMUNDS SCHOOL
BUILDING ENCLOSURE &
MECHANICAL SYSTEMS
UPGRADES

21 HARRISON RD
DENNISVILLE, ME 04628

SHEET TITLE
DEMOLITION &
PROPOSED
PARTIAL
FLOOR PLAN AA

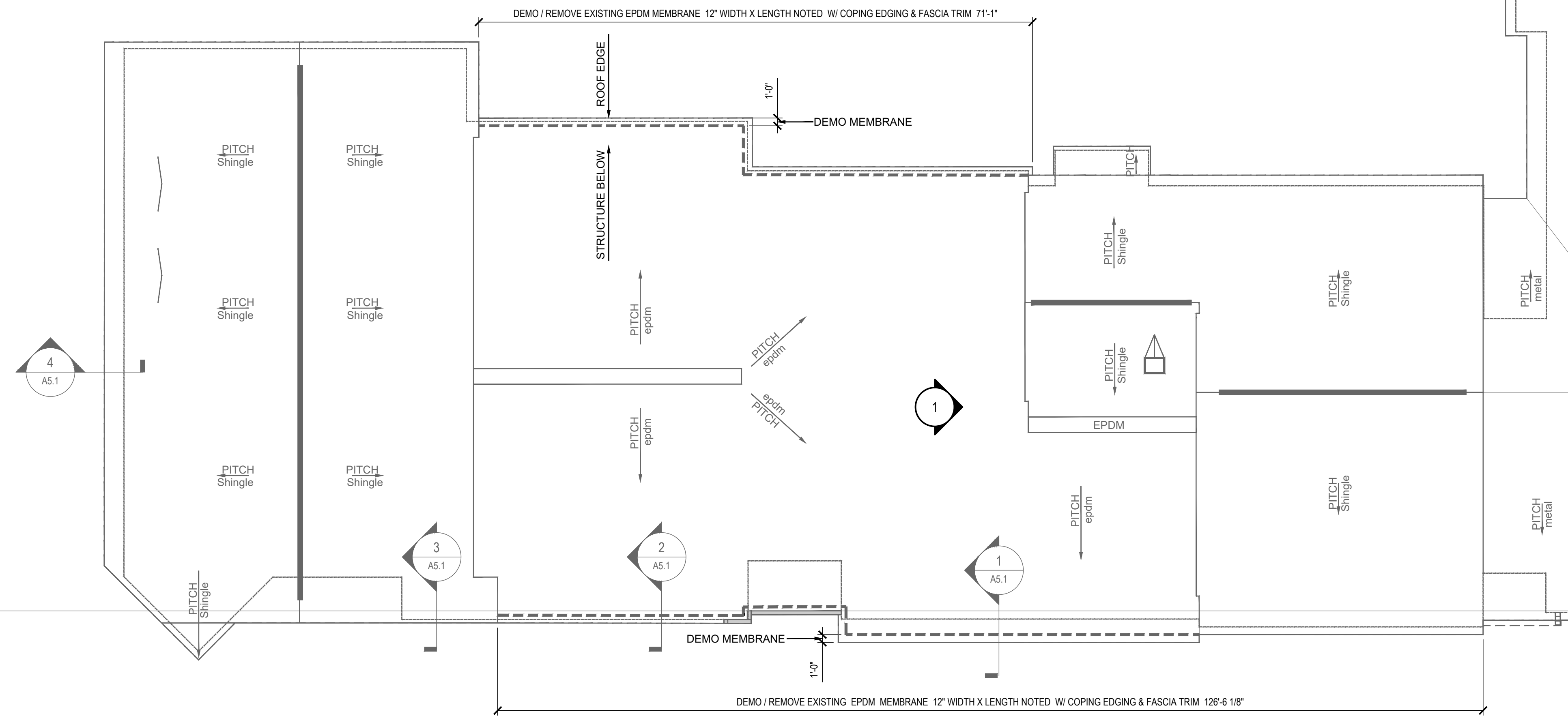
DRAWN BY	R/JH	DATE	10/30/2022
CHECKED BY	DM	USK PROJECT #	528137
PROJ. ENG.	N/A	USK ARCHIVE #	

SHEET NUMBER

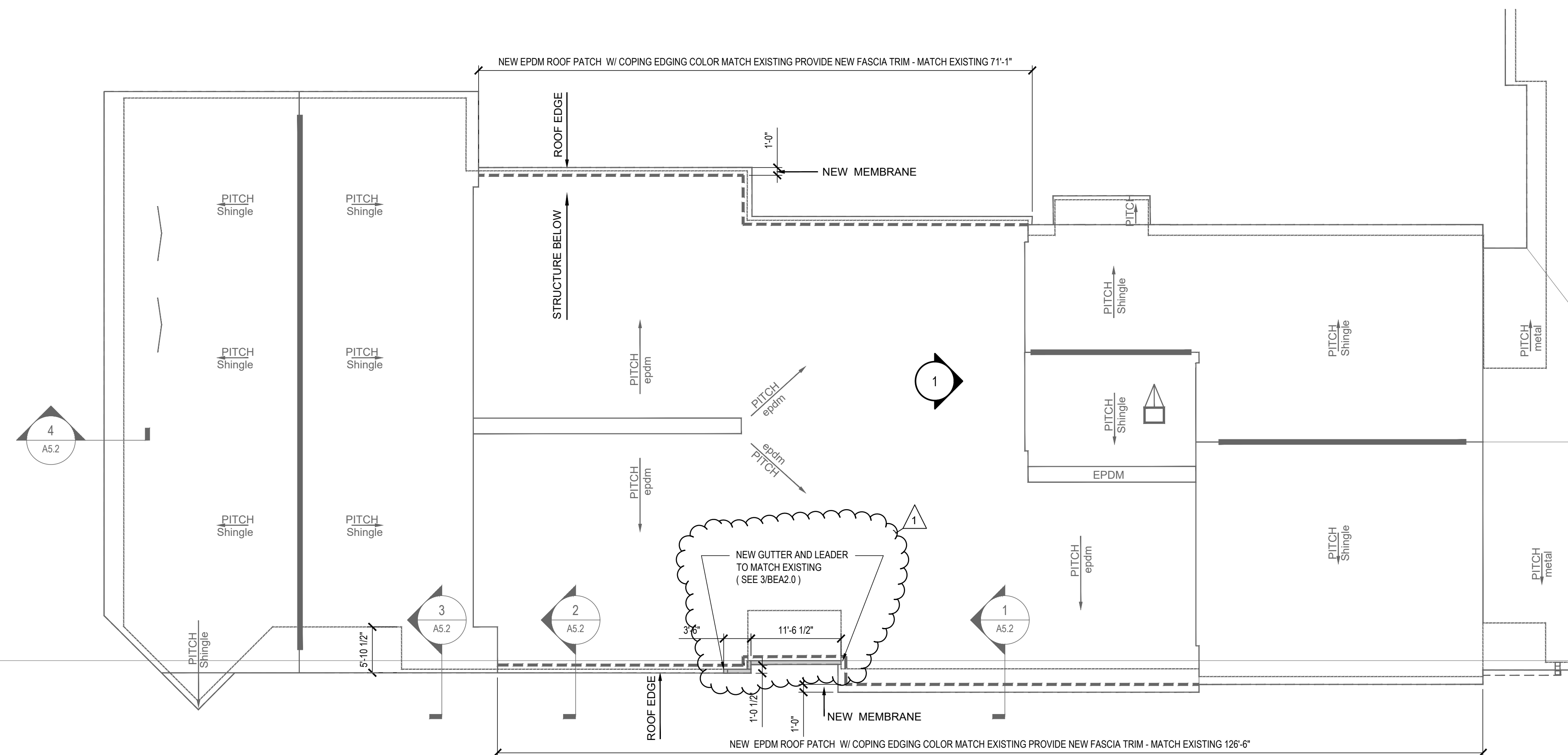
BEA1.1

SHEET 2 OF 11

ISSUED FOR BID
NOT FOR CONSTRUCTION
07-21-23



PARTIAL EXISTING | DEMOLITION ROOF PLAN [A-A]
SCALE : 1" = 10'-0"



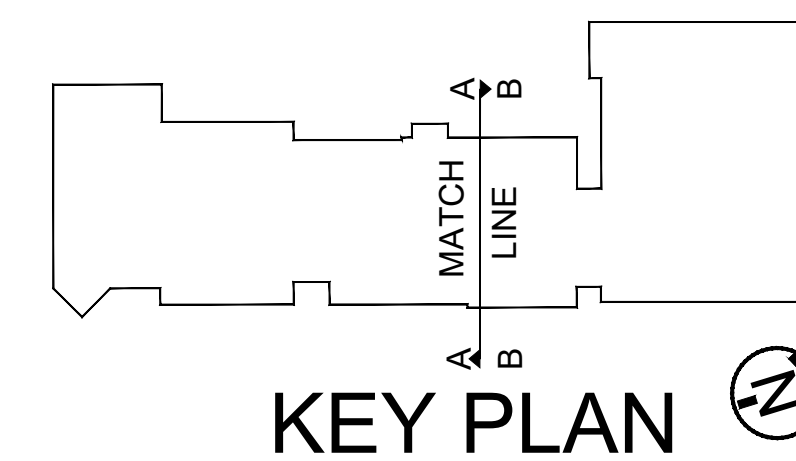
PARTIAL PROPOSED ROOF PLAN [A-A]
SCALE : 1" = 10'-0"



1 ALTERNATE-1- IMAGE SOUTH



2 ALTERNATE 1 - IMAGE NORTH



ISSUED FOR BID
NOT FOR CONSTRUCTION
07-21-23



6 GREEN TREE DRIVE
SO. BURLINGTON, VT 05403
TEL: 802.878.7661
www.dubois-king.com

VERMONT
NEW HAMPSHIRE
MAINE AND NEW YORK
© Copyright 2022 DuBois & King Inc.

LeMessurier.

1 MADISON ST., FLOOR 2
SOUTH PORTLAND MAINE, 04106
PHONE: 207-400.0086

PROFESSIONAL SEAL

BID 100%
DOCUMENTS

TSD	R/JH	BID DOCUMENTS	DATE	NO.	DESCRIPTION	BY	CK'D
0	07/21/2023						
1	08/14/2023	ADDENDUM 1					



EDMUNDS SCHOOL
BUILDING ENCLOSURE &
MECHANICAL SYSTEMS
UPGRADES

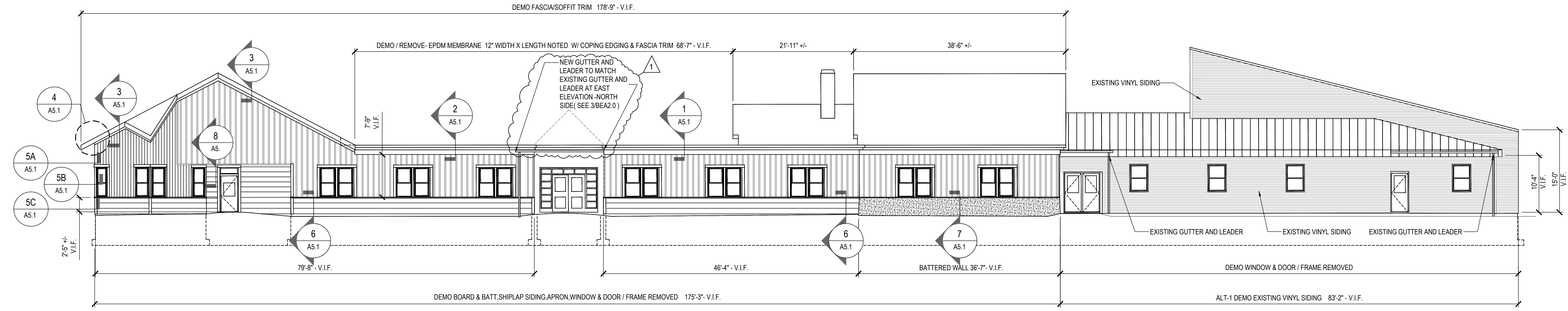
21 HARRISON RD
DENNYVILLE, ME 04628

SHEET TITLE
DEMOLITION &
PROPOSED
PARTIAL
ROOF PLAN

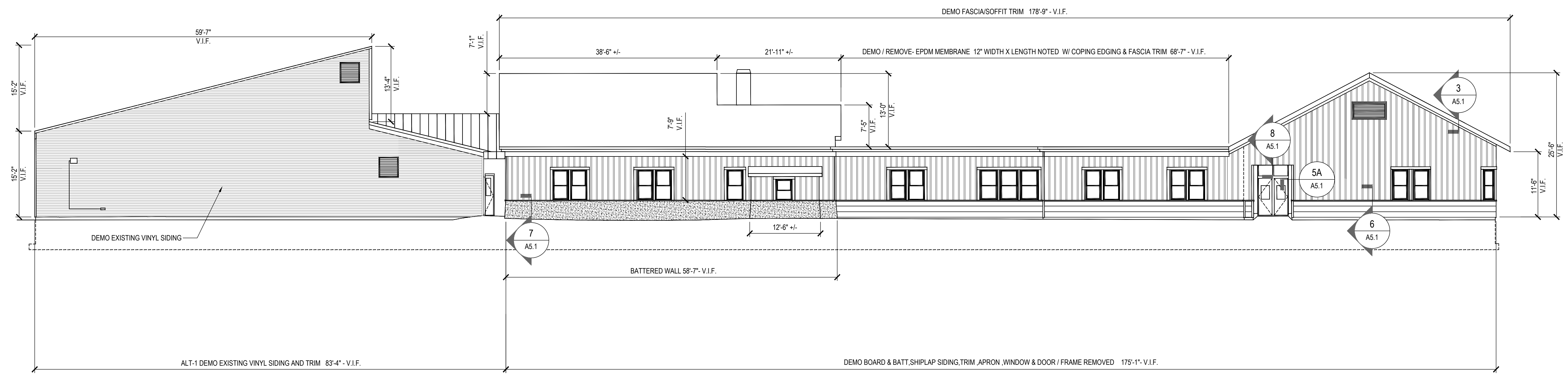
DRAWN BY R/JH	DATE 10/30/2022
CHECKED BY DM	US&K PROJECT # 528137
PROJ. ENG. N/A	US&K ARCHIVE #

SHEET NUMBER

BEA1.3

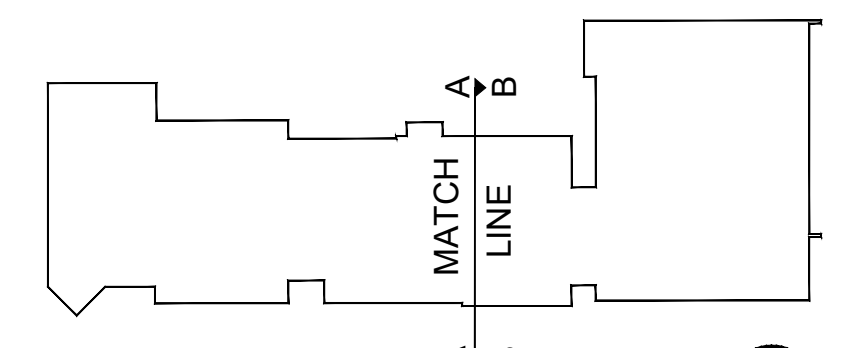


1 EAST ELEVATION DEMOLITION
 1" = 10'-0"



2 WEST ELEVATION DEMOLITION
 1" = 10'-0"

3 EXISTING GUTTERS AND LEADERS AT EAST ELEVATION -NORTH SIDE
 1" = 10'-0"



KEY PLAN

ISSUED FOR BID
 NOT FOR CONSTRUCTION
 07-21-23

PROFESSIONAL SEAL

BID 100%
 DOCUMENTS

BID DOCUMENTS	TSD	CK'D	
07/21/2023			
08/14/2023			
ADDENDUM 1			
NO.	DATE	DESCRIPTION	BY



EDMUNDS SCHOOL
 BUILDING ENCLOSURE &
 MECHANICAL SYSTEMS
 UPGRADES

21 HARRISON RD
 DENNYVILLE, ME 04628

SHEET TITLE

ELEVATIONS
 DEMOLITION

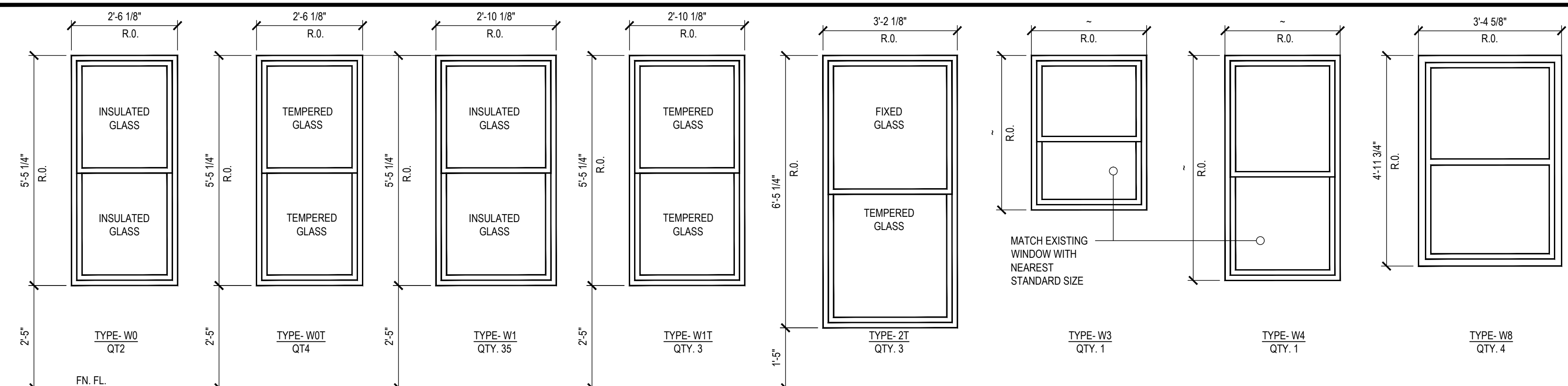
DRAWN BY RJH	DATE 10/30/2022
CHECKED BY DM	US&K PROJECT # 528137
PROJ. ENG. N/A	US&K ARCHIVE #

SHEET NUMBER

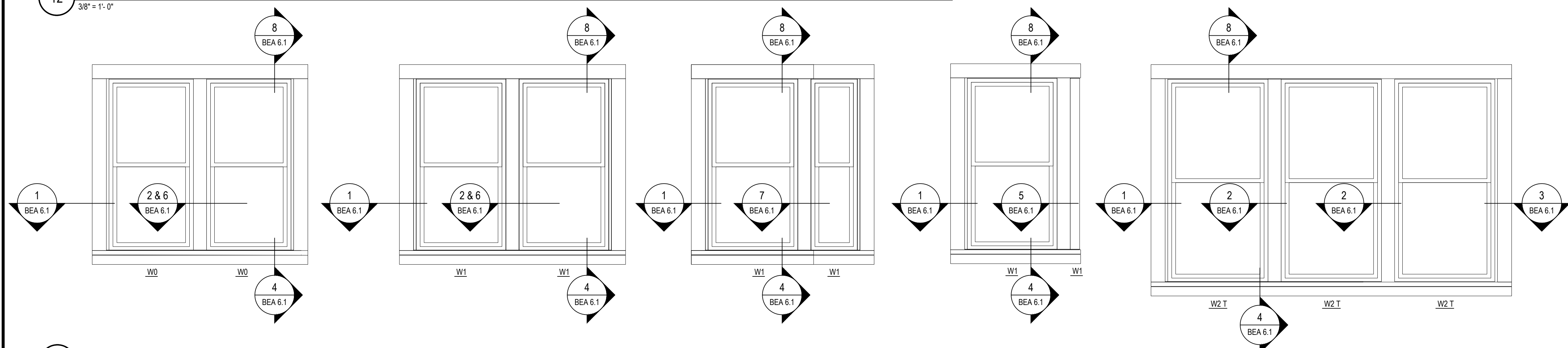
BEA2.0

TSD	R/JH	BID DOCUMENTS	NO.	DATE	DESCRIPTION	BY	CK'D
0	07/21/2023	ADDENDUM 1					
1	08/14/2023						

NOTE:
ALL WINDOWS TO BE ANDERSEN 200 SERIES DOUBLE HUNG, TILT WASH
WHITE VINYL EXTERIOR FINISH, WOOD INTERIOR POLYURETHANE FINISH.
CONTRACTOR TO V.I.F. ALL DIMENSIONS PRIOR TO ORDERING WINDOWS.

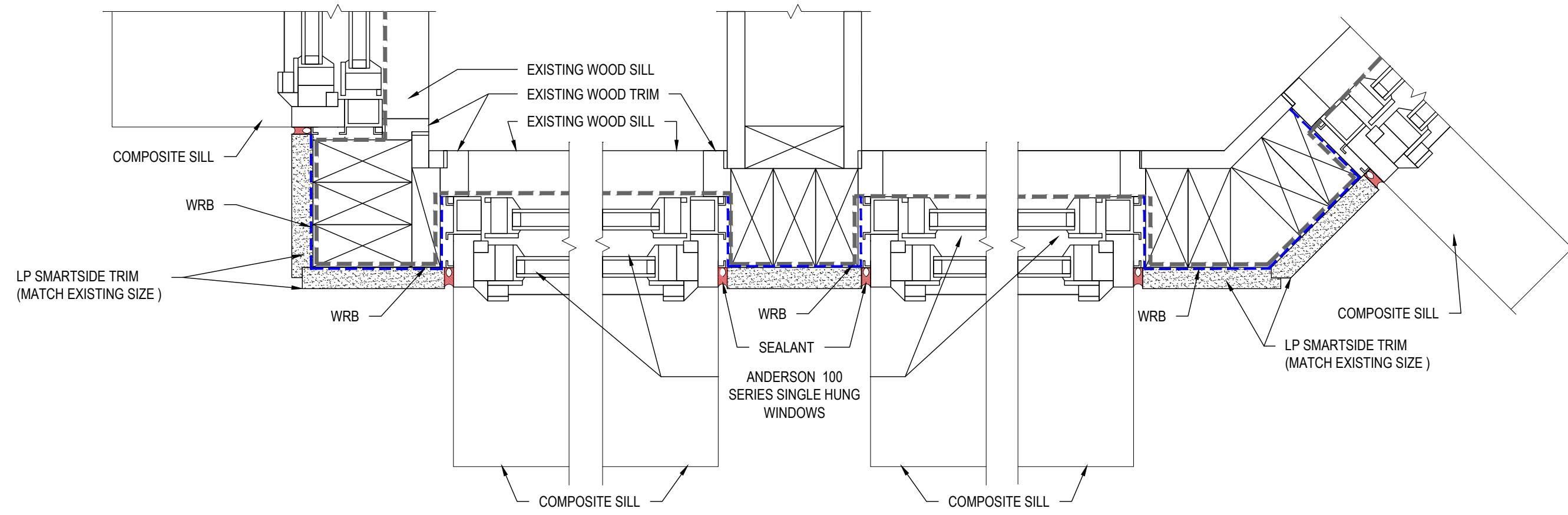


12 WINDOW TYPES
3/8" = 1'-0"



11 TYPICAL WINDOW CONFIGURATIONS
3/8" = 1'-0"

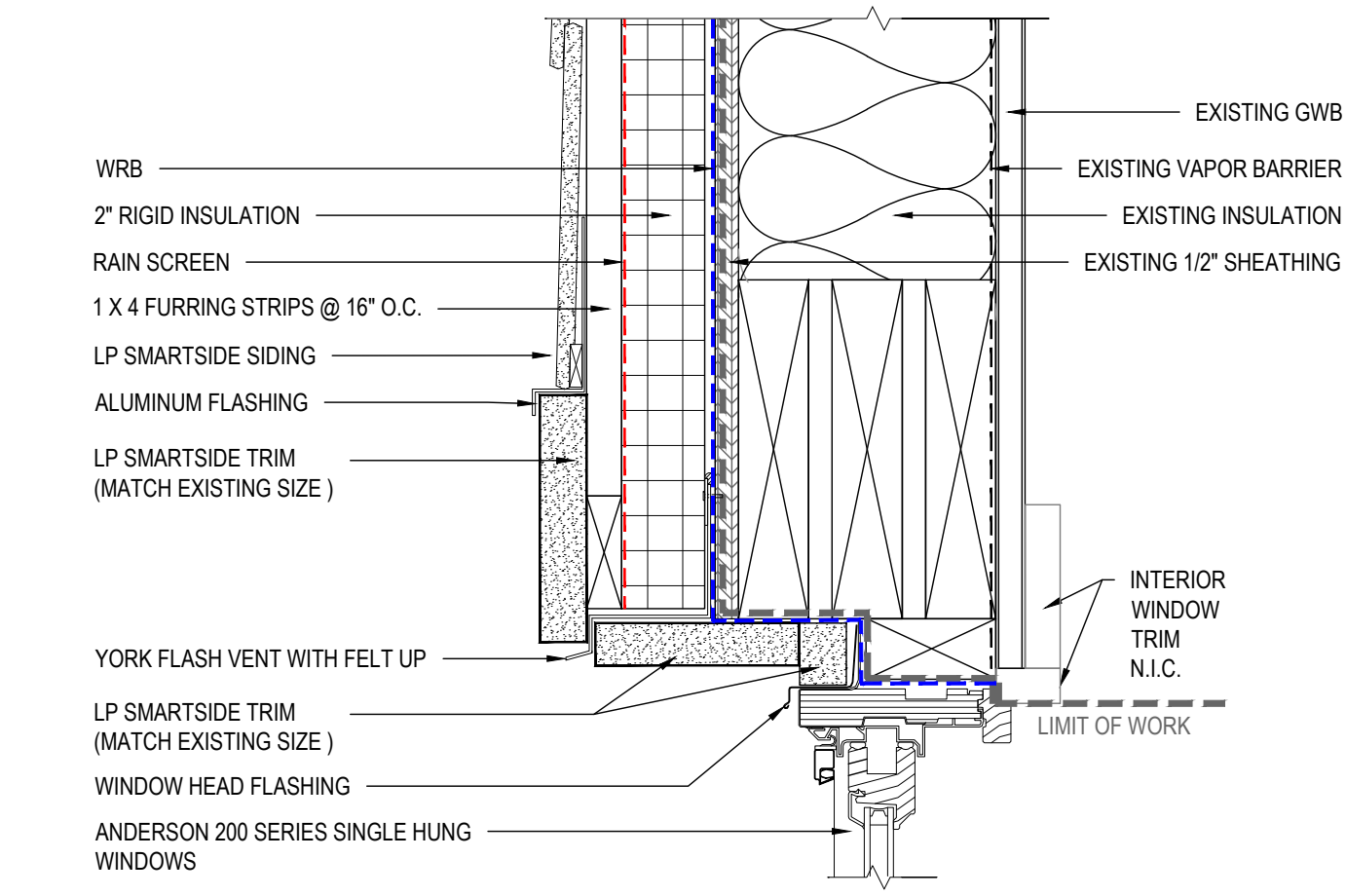
NOTE:
ALL LP SMARTSIDE TRIM & SIDING PRODUCTS EDGES / ENDS ARE TO BE PAINTED WHEN CUT.
FOLLOW MANUFACTURES RECOMMENDATIONS.



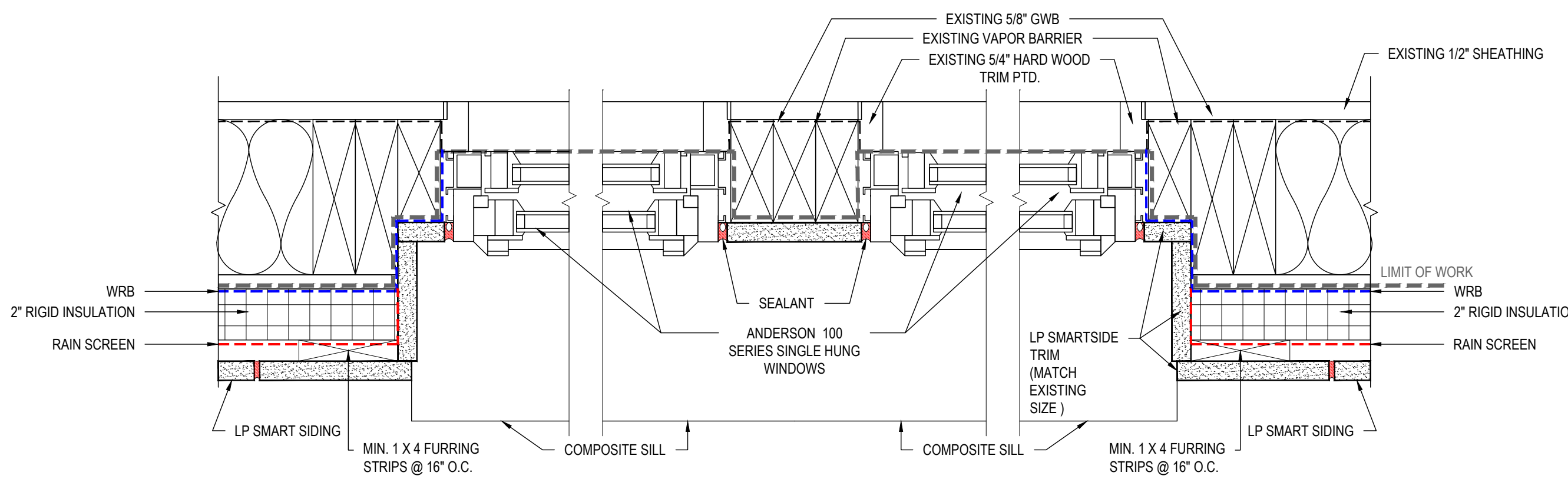
5 CORNER MULLION
3" = 1'-0"

6 VERT MULLION
3" = 1'-0"

7 ANGLED MULLION
3" = 1'-0"



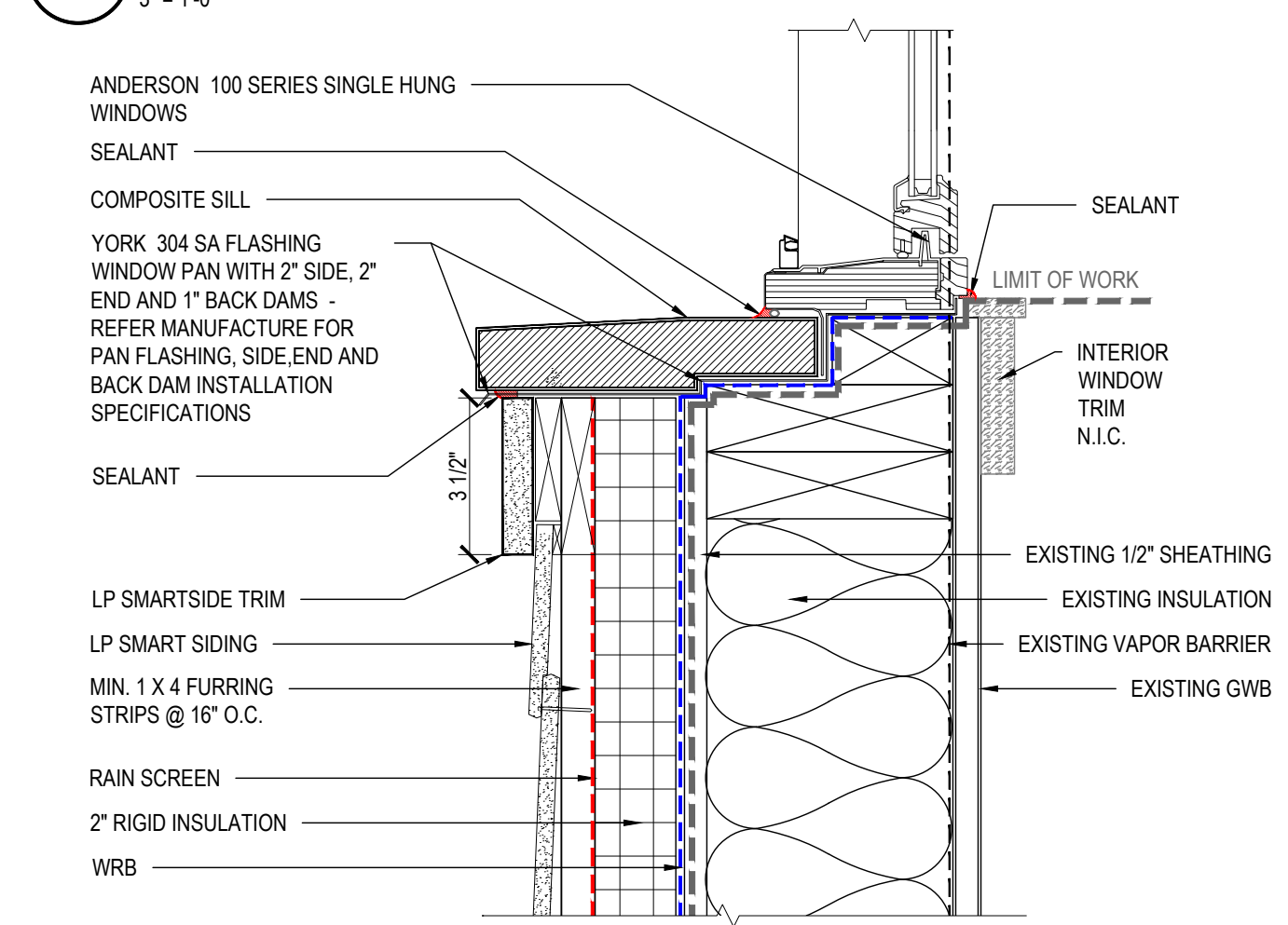
8 HEAD DETAIL
3" = 1'-0"



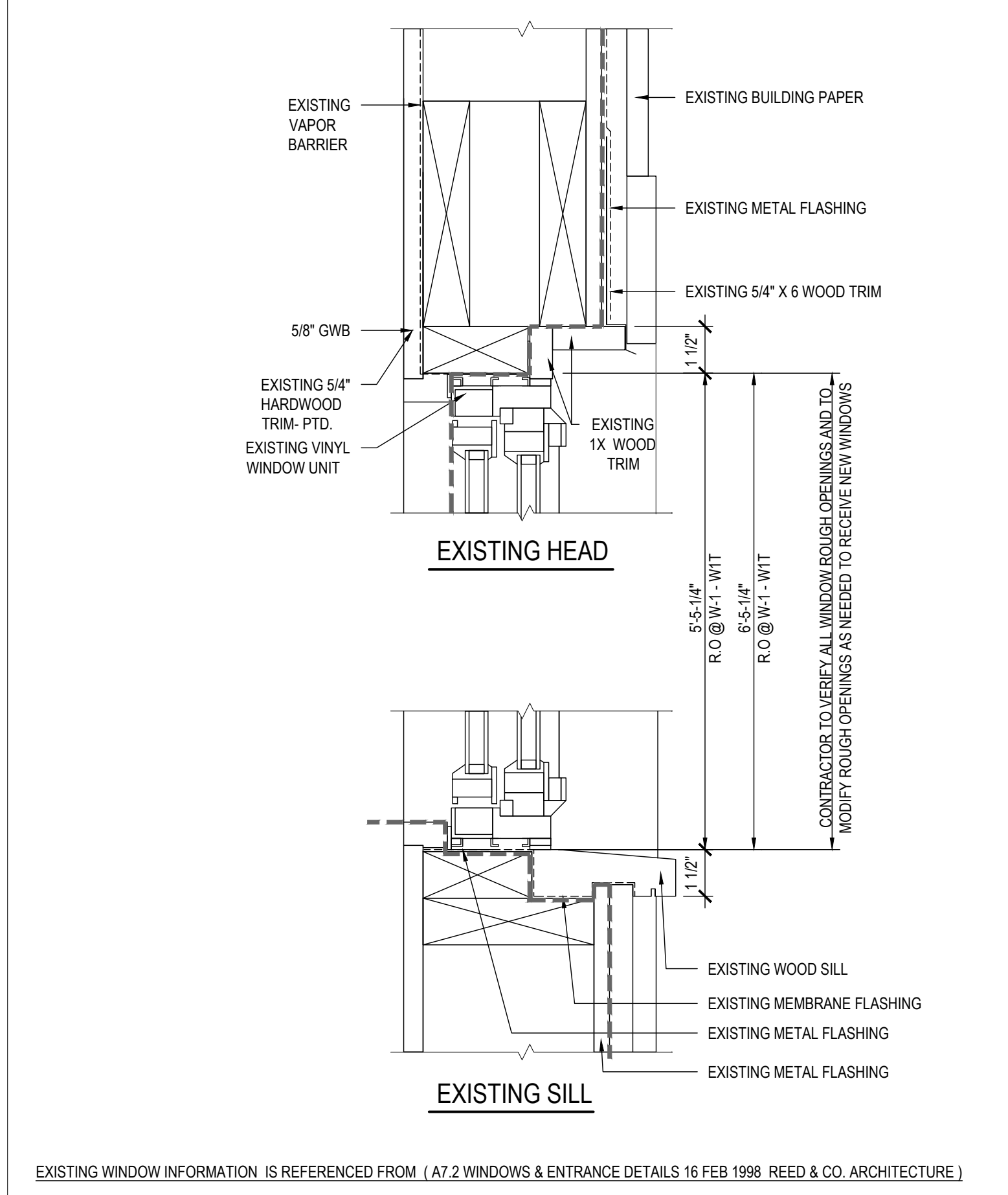
1 JAMB
3" = 1'-0"

2 VERT MULLION
3" = 1'-0"

3 JAMB
3" = 1'-0"

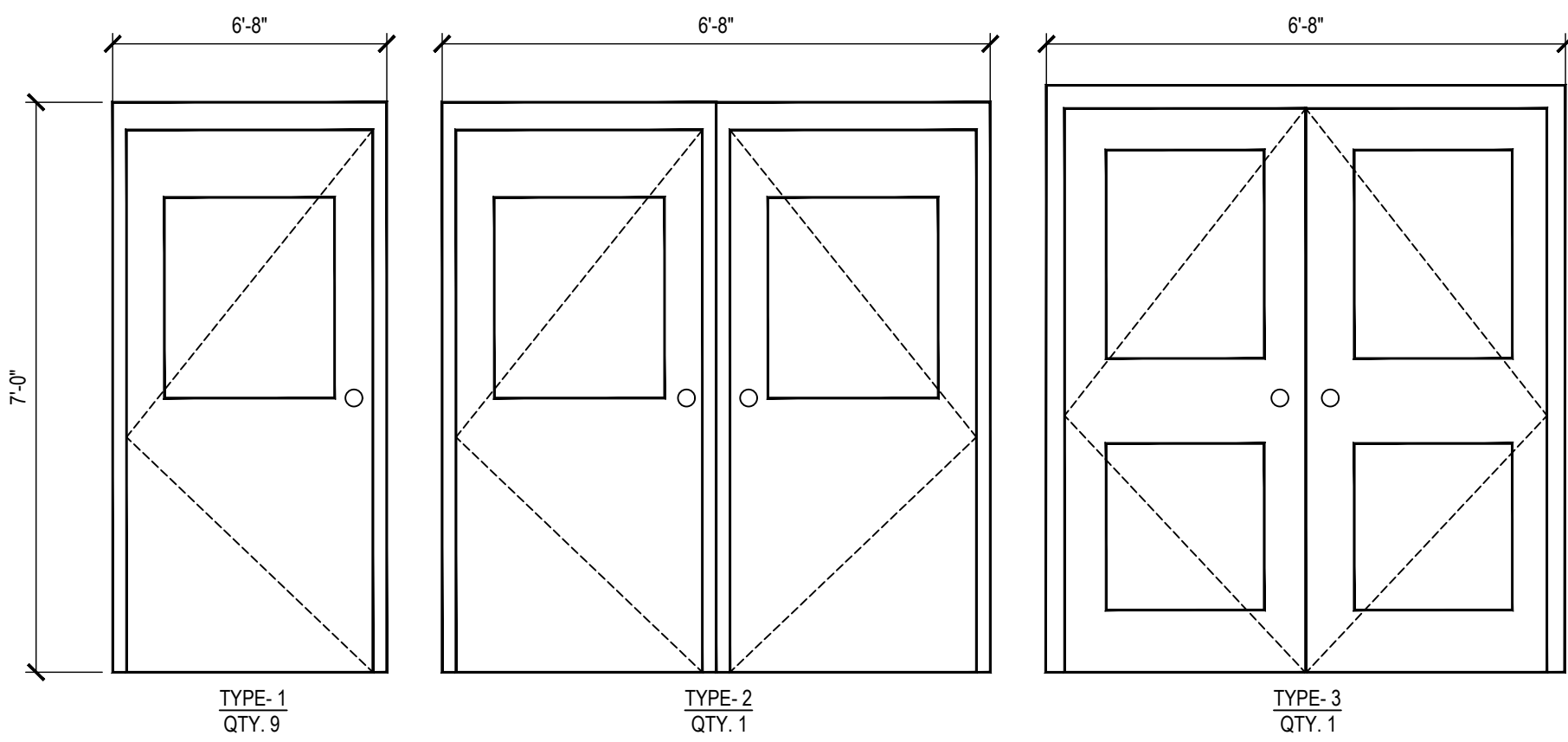


4 SILL DETAIL
3" = 1'-0"



10 TYPICAL EXISTING HEAD AND SILL (INCLUDED FOR FOR REFERENCE)
3" = 1'-0"

ISSUED FOR BID
NOT FOR CONSTRUCTION
07-21-23



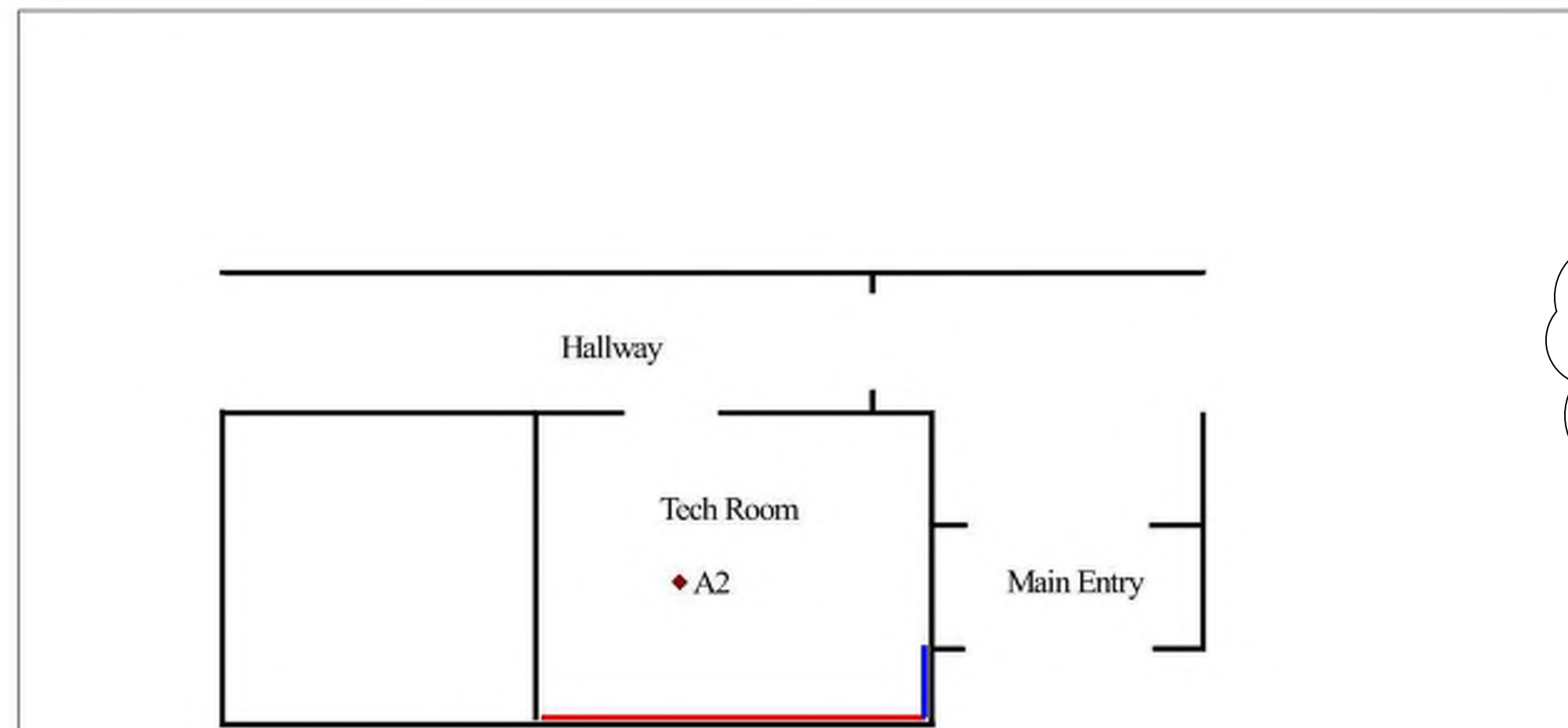
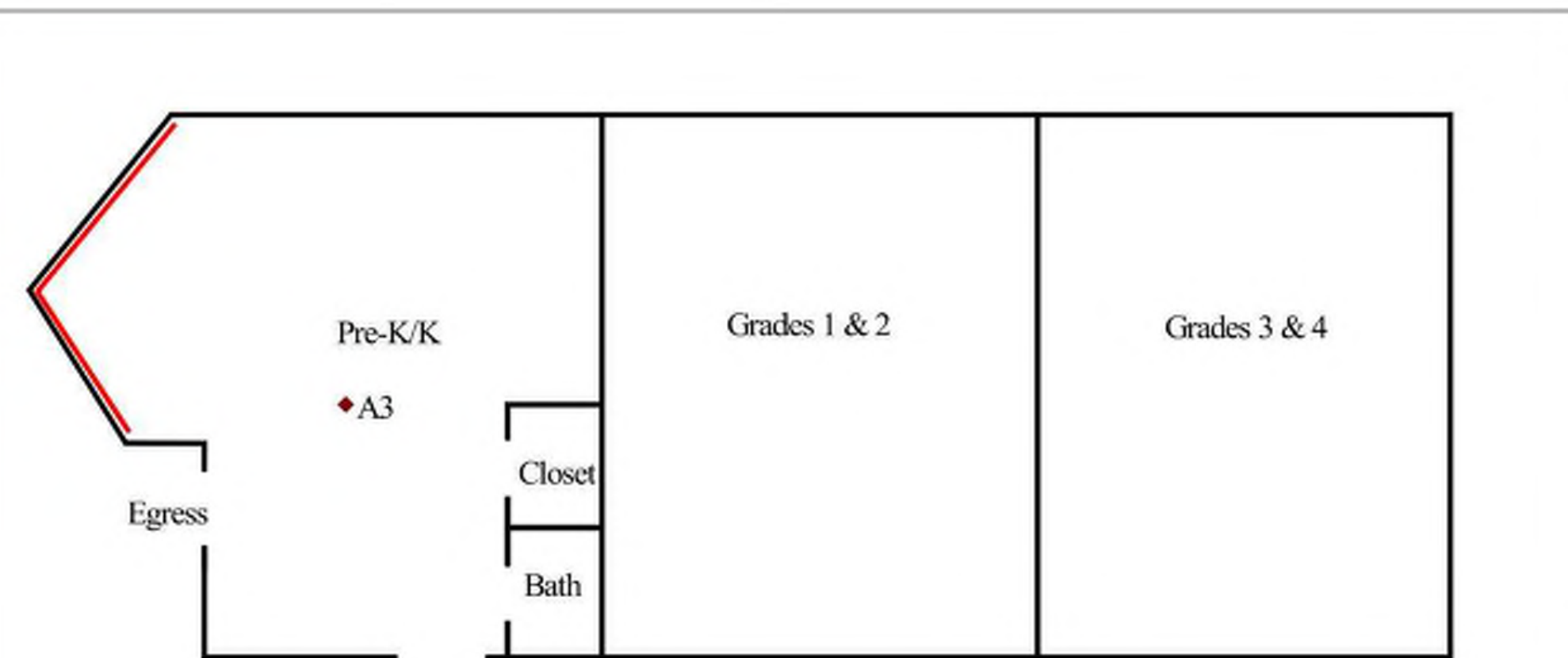
- NOTE:
1. ALL DOORS ARE TO MATCH EXISTING STYLE AND COLOR.
 2. CONTRACTOR TO V.I.F. ALL DIMENSIONS PRIOR TO ORDERING.
 3. EXISTING HARDWARE TO BE REPLACED WITH GRADE 5 EXTERIOR WITH S.S. COMPONENTS.

1 DOOR TYPES
1/2" = 1'-0"

DOOR SCHEDULE								
TAG	TYPE	FRAME MATERIAL	DOOR MATERIAL	FINISH	REMARKS	GRADE	HARDWARE	GLASS
DO8.2	1	MTL	MTL	PAINT	INSULATED	COMMERCIAL - SECURE STEEL SERVICE	GRADE 5 EXTERIOR WITH S.S. COMPONENTS	LAMINATED
DO1.1	3	MTL	MTL	PAINT	INSULATED	COMMERCIAL - SECURE STEEL SERVICE	GRADE 5 EXTERIOR WITH S.S. COMPONENTS	LAMINATED
DV20	2	MTL	MTL	PAINT	INSULATED	COMMERCIAL - SECURE STEEL SERVICE	GRADE 5 EXTERIOR WITH S.S. COMPONENTS	LAMINATED
DK22	1	MTL	MTL	PAINT	INSULATED	COMMERCIAL - SECURE STEEL SERVICE	GRADE 5 EXTERIOR WITH S.S. COMPONENTS	LAMINATED
DM24	1	MTL	MTL	PAINT	INSULATED	COMMERCIAL - SECURE STEEL SERVICE	GRADE 5 EXTERIOR WITH S.S. COMPONENTS	LAMINATED
DM26	1	MTL	MTL	PAINT	INSULATED	COMMERCIAL - SECURE STEEL SERVICE	GRADE 5 EXTERIOR WITH S.S. COMPONENTS	LAMINATED
DP28	1	MTL	MTL	PAINT	INSULATED	COMMERCIAL - SECURE STEEL SERVICE	GRADE 5 EXTERIOR WITH S.S. COMPONENTS	LAMINATED
DS30	1	MTL	MTL	PAINT	INSULATED	COMMERCIAL - SECURE STEEL SERVICE	GRADE 5 EXTERIOR WITH S.S. COMPONENTS	LAMINATED
D8.2	1	MTL	MTL	PAINT	INSULATED	COMMERCIAL - SECURE STEEL SERVICE	GRADE 5 EXTERIOR WITH S.S. COMPONENTS	LAMINATED
D14.2	1	MTL	MTL	PAINT	INSULATED	COMMERCIAL - SECURE STEEL SERVICE	GRADE 5 EXTERIOR WITH S.S. COMPONENTS	LAMINATED
D12.2	1	MTL	MTL	PAINT	INSULATED	COMMERCIAL - SECURE STEEL SERVICE	GRADE 5 EXTERIOR WITH S.S. COMPONENTS	LAMINATED

EXISTING TO REMAIN (ALREADY REPLACED)

3 DOOR SCHEDULE
1/2" = 1'-0"



Sample Location (TB - Tape, A# - Air)

Remove Wall System 4' Up From Floor. Dry, HEPA Vac. Treat Wall Framing With Clean Treatment System & Replace Wall System

Note: After removal of the materials as outlined above, an evaluation of the exposed surfaces should be performed. Damages may extend further than noted and these surfaces may warrant removal.

1) All Cleaning & Restoration Activities Should be Completed In Accordance With IICRC S520 & S500 Standards.
2) Prior To Application Of Any Sealants, All Wood Surfaces Should Be Dried To Below 15%

Air Quality Management Services, Inc.
PO Box 2491, Lewiston, Maine 04211
Phone (207)657-7360 Fax (207)657-7361
Client: State of Maine EIU
Richard Colpitts
Project: Bio-Remedial Assessment
Address: 21 Harrison Road
Edmunds TWP, Maine
AQM Project: 21-643 Claim/File: ND
Inspection Date: 8/30/21 Scale: None

Sample Location (TB - Tape, A# - Air)

Remove Wall System 4' Up From Floor. Dry, HEPA Vac. Treat Wall Framing With Clean Treatment System & Replace Wall System

Remove Wall Floor to Ceiling. Dry, HEPA Vac. Treat Wall Framing With Clean Treatment System & Replace Wall System

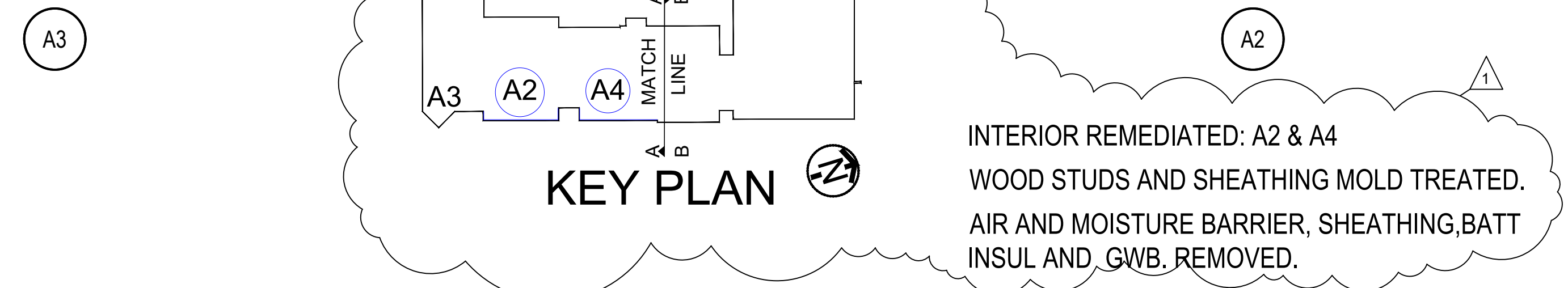
Note: After removal of the materials as outlined above, an evaluation of the exposed surfaces should be performed. Damages may extend further than noted and these surfaces may warrant removal.

1) All Cleaning & Restoration Activities Should be Completed In Accordance With IICRC S520 & S500 Standards.
2) Prior To Application Of Any Sealants, All Wood Surfaces Should Be Dried To Below 15%

Air Quality Management Services, Inc.
PO Box 2491, Lewiston, Maine 04211
Phone (207)657-7360 Fax (207)657-7361
Client: State of Maine EIU
Richard Colpitts
Project: Bio-Remedial Assessment
Address: 21 Harrison Road
Edmunds TWP, Maine
AQM Project: 21-643 Claim/File: ND
Inspection Date: 8/30/21 Scale: None



IMAGES OF REMEDIATION



3 BIO-REMEDIATION ASSESSMENT
NOT TO SCALE

ISSUED FOR BID
NOT FOR CONSTRUCTION
07-21-23

DuBois & King
6 GREEN TREE DRIVE
SO. BURLINGTON, VT 05403
TEL: 802.878.7661
www.dubois-king.com
VERMONT
NEW HAMPSHIRE
MAINE AND NEW YORK
© Copyright 2022 DuBois & King Inc.

LeMessurier.
1 MADISON ST., FLOOR 2
SOUTH PORTLAND MAINE, 04106
PHONE: 207.400.0086

PROFESSIONAL SEAL

BID 100% DOCUMENTS

TSD	R/JH	BID DOCUMENTS	ADDENDUM 1	NO.	DATE	DESCRIPTION	BY	CK'D
0	07/21/2023							
1	08/14/2023							

Maine DOE
AUGUSTA, ME
EDMUNDS SCHOOL
BUILDING ENCLOSURE &
MECHANICAL SYSTEMS
UPGRADES

21 HARRISON RD
DENNISVILLE, ME 04628

SHEET TITLE
DOOR FRAME,
HARDWARE
SCHEDULE, DETAILS,
BIO-REMEDIATION
ASSESSMENT

DRAWN BY	DATE
R/JH	10/30/2022
CHECKED BY	DSK PROJECT #
DM	528137
PROJ. ENG.	DSK ARCHIVE #
N/A	

SHEET NUMBER
BEA6.2
SHEET 11 OF 11

00 11 13
Notice to Contractors

Edmunds School Enclosure Repairs & Mechanical Systems Upgrades

BGS Project No. 3355

Building enclosure & mechanical systems upgrades at the Edmunds School in Edmunds Township, Maine.

The cost of the work is approximately \$ 1,000,000. The contract shall designate the Substantial Completion Date on or before *16 August 2024*, and the Contract Final Completion Date on or before *30 August 2024*.

1. Submit bids on a completed Contractor Bid Form, plus bid security when required, all scanned and included as an attachment to an email with the subject line marked "**Bid for Edmunds School Enclosure Repair & Mechanical Systems Upgrades**" and addressed to the Bid Administrator at: BGS.Architect@Maine.gov, so as to be received no later than **2:00:00 p.m.** on ~~August 15, 2023~~ **August 17, 2023** **ADDENDUM 01**.

Bid submissions will be opened and read aloud at the time and date noted above at the Bureau of General Services office, accessible as a video conference call. Those who wish to participate in the call must submit a request for access to BGS.Architect@Maine.gov.

Any bid received after the noted time will not be considered a valid bid and will remain unopened. Any bid submitted by any other means will not be considered a valid bid. The Bid Administrator may require the Bidder to surrender a valid paper copy of the bid form or the bid security document in certain circumstances.

Questions on the bid opening process shall be addressed to the Bid Administrator: Joseph H. Ostwald, Director, Division of Planning, Design & Construction, Bureau of General Services, 77 State House Station, Augusta, Maine 04333-0077, BGS.Architect@Maine.gov.

2. The bid shall be submitted on the Contractor Bid Form (section 00 41 13) provided in the Bid Documents. The Owner reserves the right to accept or reject any or all bids as may best serve the interest of the Owner.
3. Bid security *is required* on this project.
If noted above as required, the Bidder shall include a satisfactory Bid Bond (section 00 43 13) or a certified or cashier's check for 5% of the bid amount with the completed bid form submitted to the Owner. The Bid Bond form is available on the BGS website.
4. Performance and Payment Bonds *are required* on this project.
If noted above as required, or if any combination of Base Bid and Alternate Bids amounts selected in the award of the contract exceeds \$125,000.00, the selected Contractor shall furnish a 100% contract Performance Bond (section 00 61 13.13) and a 100% contract Payment Bond (section 00 61 13.16) in the contract amount to cover the execution of the Work. Bond forms are available on the BGS website.
5. Filed Sub-bids *are not required* on this project.

00 11 13
Notice to Contractors

6. There *are no* Pre-qualified General Contractors on this project.
If Pre-qualified General Contractors are identified for this project, the name of each company, with their city and state, are listed below.

7. An on-site pre-bid conference *will* be conducted for this project.
If a pre-bid conference is scheduled, it is *optional* for General Contractors and optional for Subcontractors and suppliers. Contractors who arrive late or leave early for a mandatory meeting may be prohibited from participating in this meeting and bidding. *August 3, 2023 at 2 p.m. at the Edmunds School in Edmunds Township, Maine.*

8. Bid Documents - full sets only - will be available on or about *July 24, 2023* and may be obtained from:
Print Bangor
8 Central Street
Bangor, Maine 04401e
Electronic contract documents (PDFs) can be obtained free-of-charge from DuBois & King Inc. at www.dubois-king.com/projects-bidding-active

9. Bid Documents may be examined at:

<i>AGC Maine</i>	<i>Construction Summary</i>
<i>188 Whitten Road</i>	<i>734 Chestnut Street</i>
<i>Augusta, ME 04330</i>	<i>Manchester, NH 03104</i>
<i>Phone 207-622-4741 Fax 207-622-1625</i>	<i>Phone 603-627-8856 Fax 603-627-4524</i>

**00 41 13
Contractor Bid Form**

Edmunds School Building Enclosure Repairs & Mechanical Systems Upgrades

BGS No. 3355

Bid Form submitted by: *email only to email address below*

Bid Administrator:

Jill Instasi
Bureau of General Services
111 Sewall Street, Cross State Office Building, 4th floor
77 State House Station
Augusta, Maine 04333-0077

BGS.Architect@Maine.gov

Bidder:

Signature: _____

Printed name and title: _____

Company name: _____

Mailing address: _____

City, state, zip code: _____

Phone number: _____

Email address: _____

State of incorporation, if a corporation: _____

List of all partners, if a partnership: _____

The Bidder agrees, if the Owner offers to award the contract, to provide any and all bonds and certificates of insurance, as well as Schedule of Values, Project Schedule, and List of Subcontractors and Suppliers if required by the Owner, and to sign the designated Construction Contract within twelve calendar days after the date of notification of such acceptance, except if the twelfth day falls on a State of Maine government holiday or other closure day, or a Saturday, or a Sunday, in which case the aforementioned documents must be received before 12:00 noon on the first available business day following the holiday, other closure day, Saturday, or Sunday.

As a guarantee thereof, the Bidder submits, together with this bid, a bid bond or other acceptable instrument as and if required by the Bid Documents.

00 41 13
Contractor Bid Form

1. The Bidder, having carefully examined the Edmunds School Enclosure Repairs & Mechanical Systems Upgrades Project Manual dated July 21, 2023, prepared by DuBois & King Inc., as well as Specifications, Drawings, and any Addenda, the form of contract, and the premises and conditions relating to the work, proposes to furnish all labor, equipment and materials necessary for and reasonably incidental to the construction and completion of this project for the **Base Bid** amount of:

\$ _____ .00

2. Allowances *are not included* on this project.
No Allowances

\$ 0.00

3. Alternate Bids *are included* on this project.
Alternate Bids are as shown below

Any dollar amount line below that is left blank by the Bidder shall be read as a bid of **\$0.00**.

1 *Remove and replace vinyl siding as shown on sheet BEA1.2* \$ _____ .00

2 *not used* \$ _____ .00

3 *not used* \$ _____ .00

4 *not used* \$ _____ .00

4. Bid security *is required* on this project.

If noted above as required, or if the Base Bid amount exceeds \$125,000.00, the Bidder shall include with this bid form a satisfactory Bid Bond (section 00 43 13) or a certified or cashier's check for 5% of the bid amount with this completed bid form submitted to the Owner.

5. Filed Sub-bids *are not required* on this project.

If noted above as required, the Bidder shall include with this bid form a list of each Filed Sub-bidder selected by the Bidder on the form provided (section 00 41 13F).

**SECTION 012300
ALTERNATES**

PART 1 GENERAL

1.01 SECTION INCLUDES

- A. Description of Alternates.
- B. Procedures for pricing Alternates.
- C. Documentation of changes to Contract Price and Contract Time.

1.02 ACCEPTANCE OF ALTERNATES

- A. Alternates quoted on Bid Forms will be reviewed and accepted or rejected at Owner's option. Accepted Alternates will be identified in the Owner-Contractor Agreement.
- B. Coordinate related work and modify surrounding work to integrate the Work of each Alternate.

1.03 SCHEDULE OF ALTERNATES

- A. Alternate No. 1 - Remove existing vinyl siding and replace with new vinyl siding as shown on sheet BEA1.2:

PART 2 PRODUCTS - NOT USED

PART 3 EXECUTION - NOT USED

END OF SECTION 012300